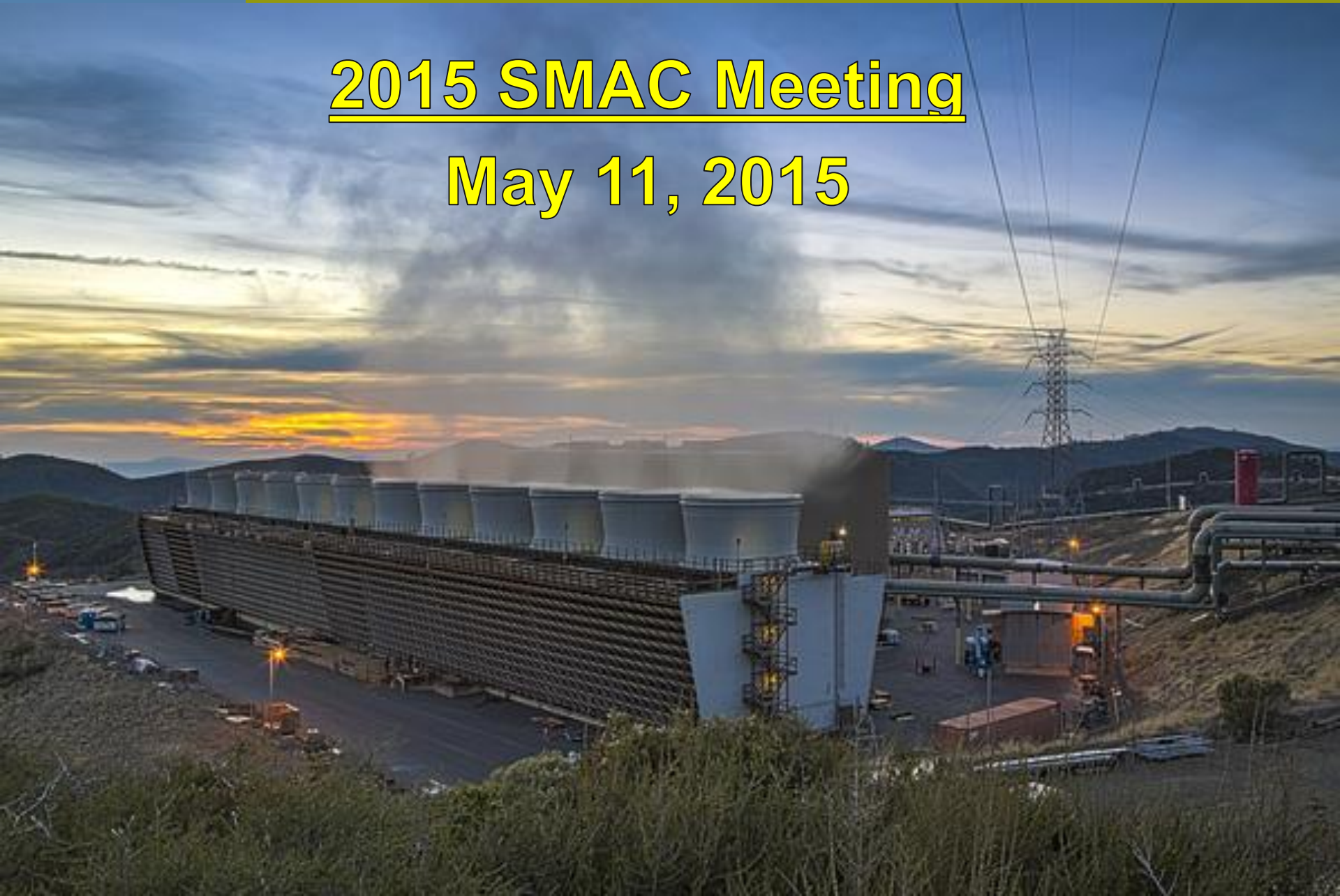
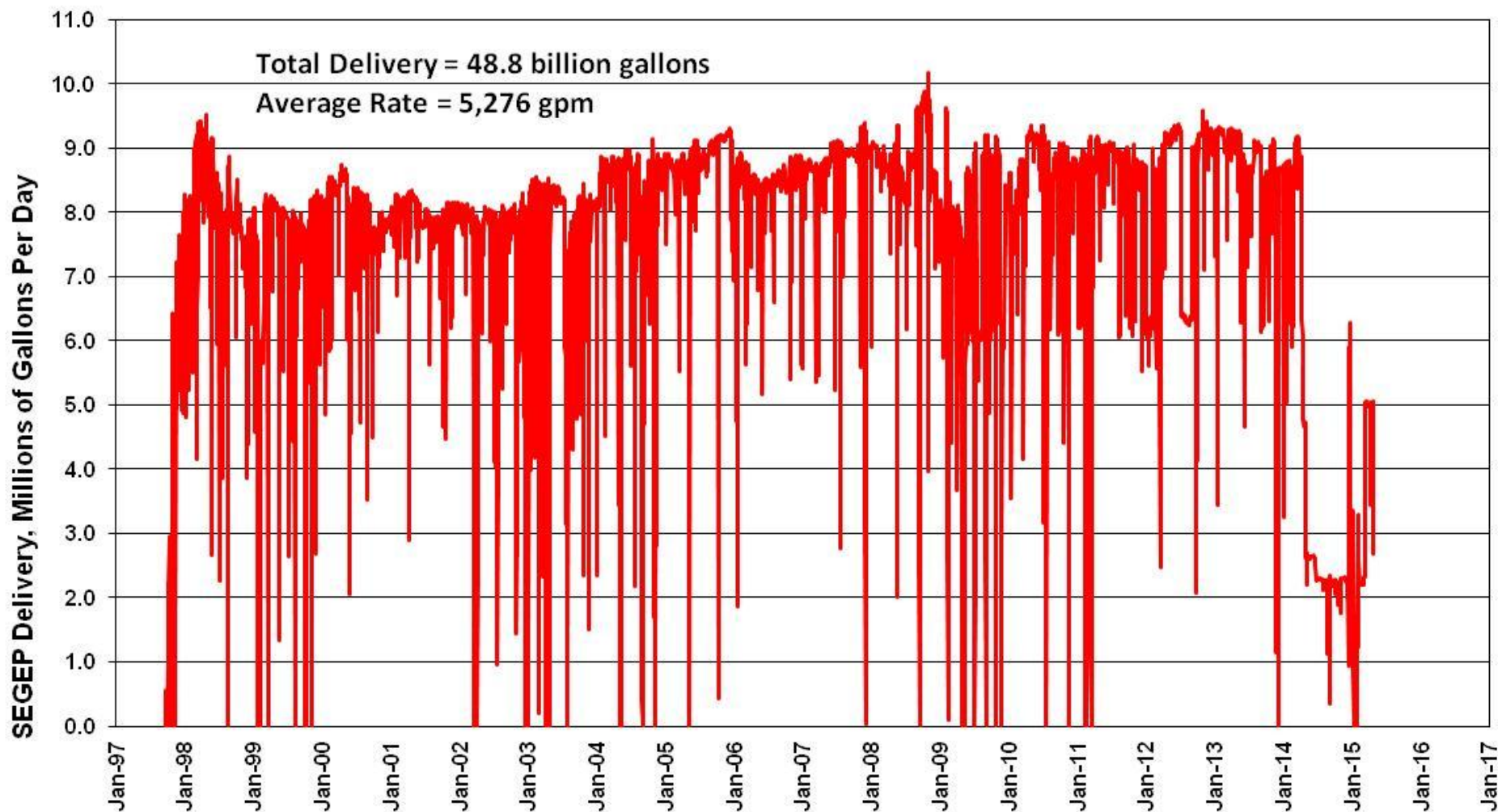


# 2015 SMAC Meeting

## May 11, 2015



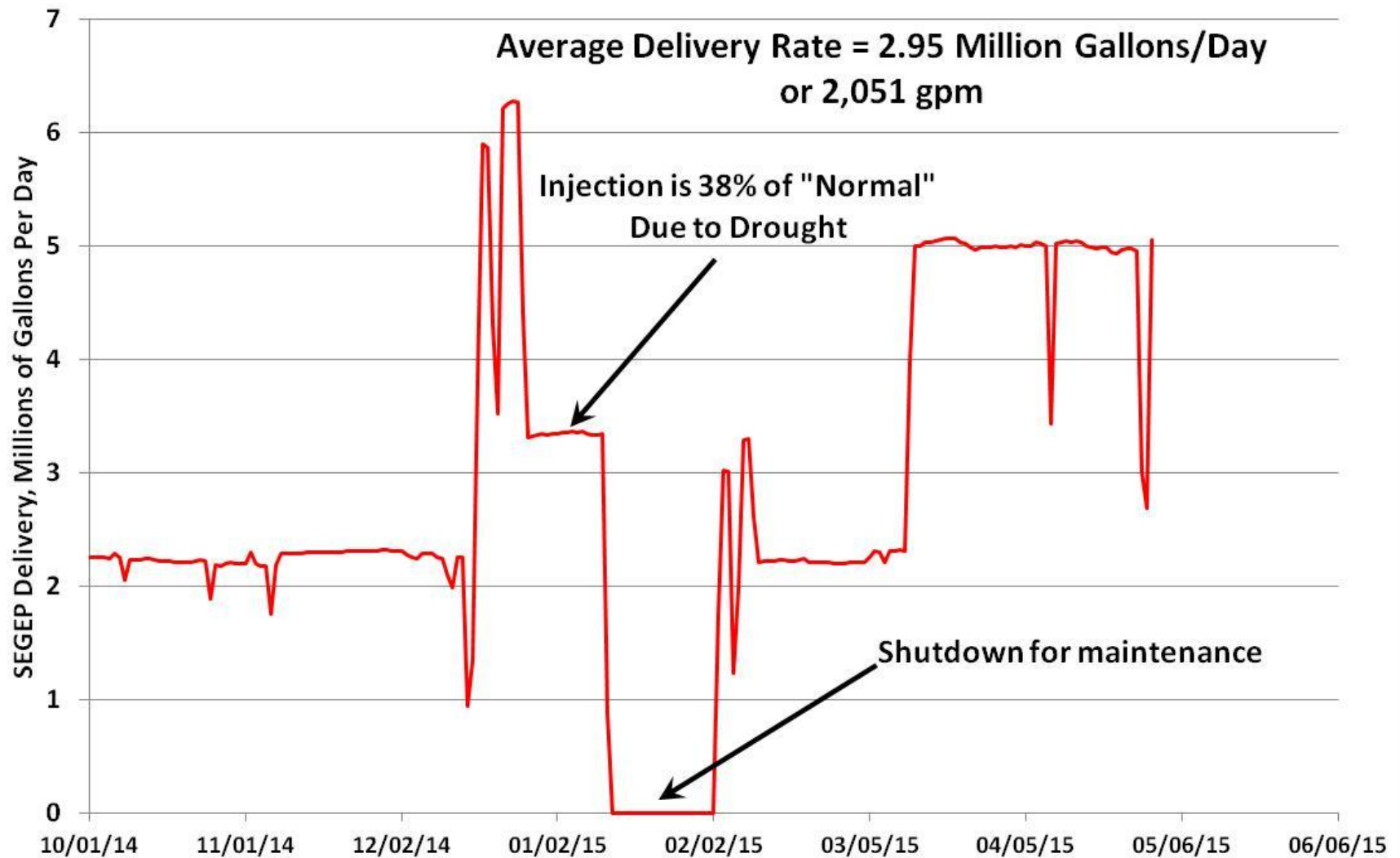
## Historical SE Geysers Effluent Pipeline Deliveries to The Geysers



## Southeast Geysers Effluent Pipeline Delivery

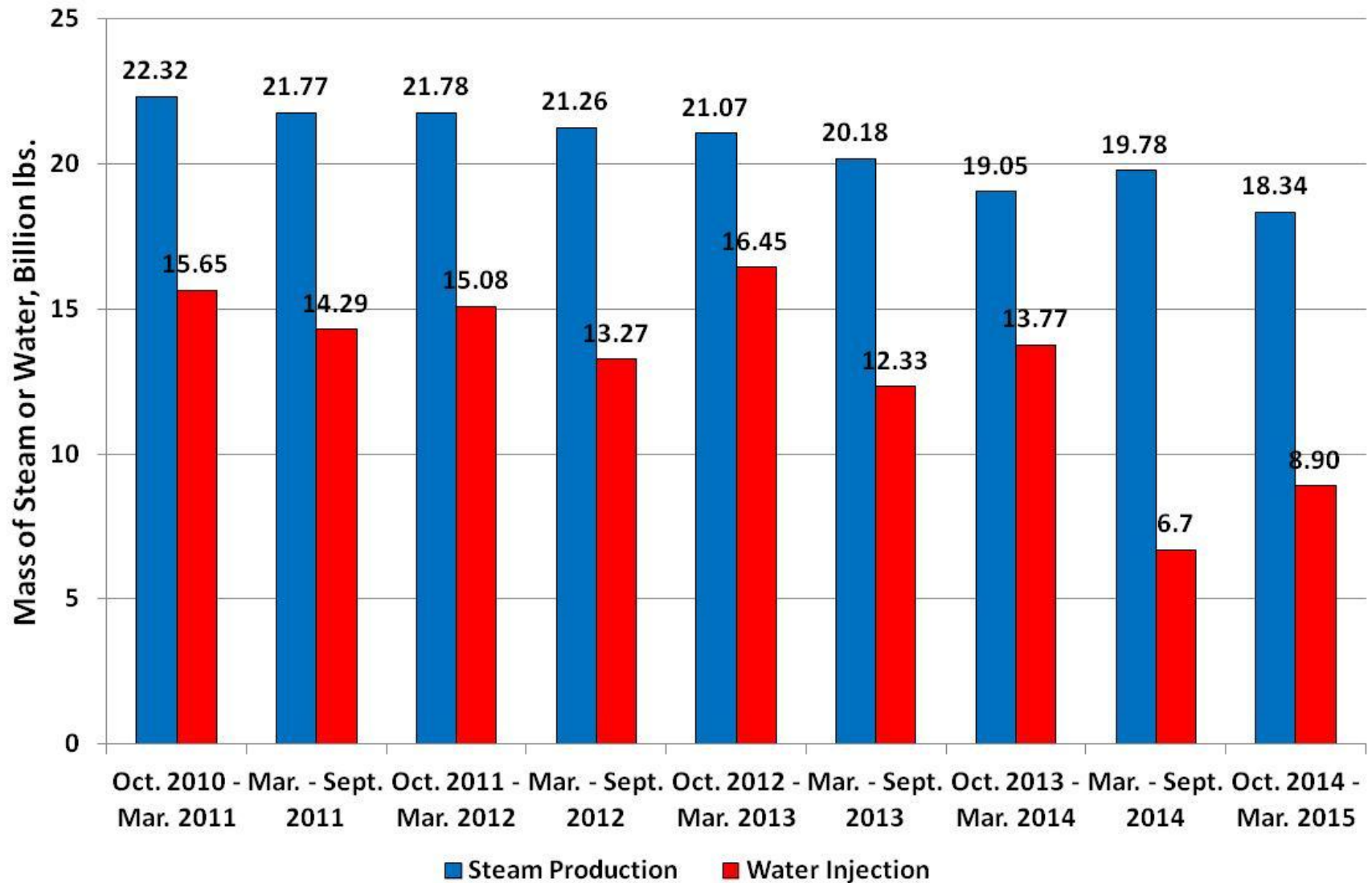
October 1, 2014 through April 30, 2015

Figure 2

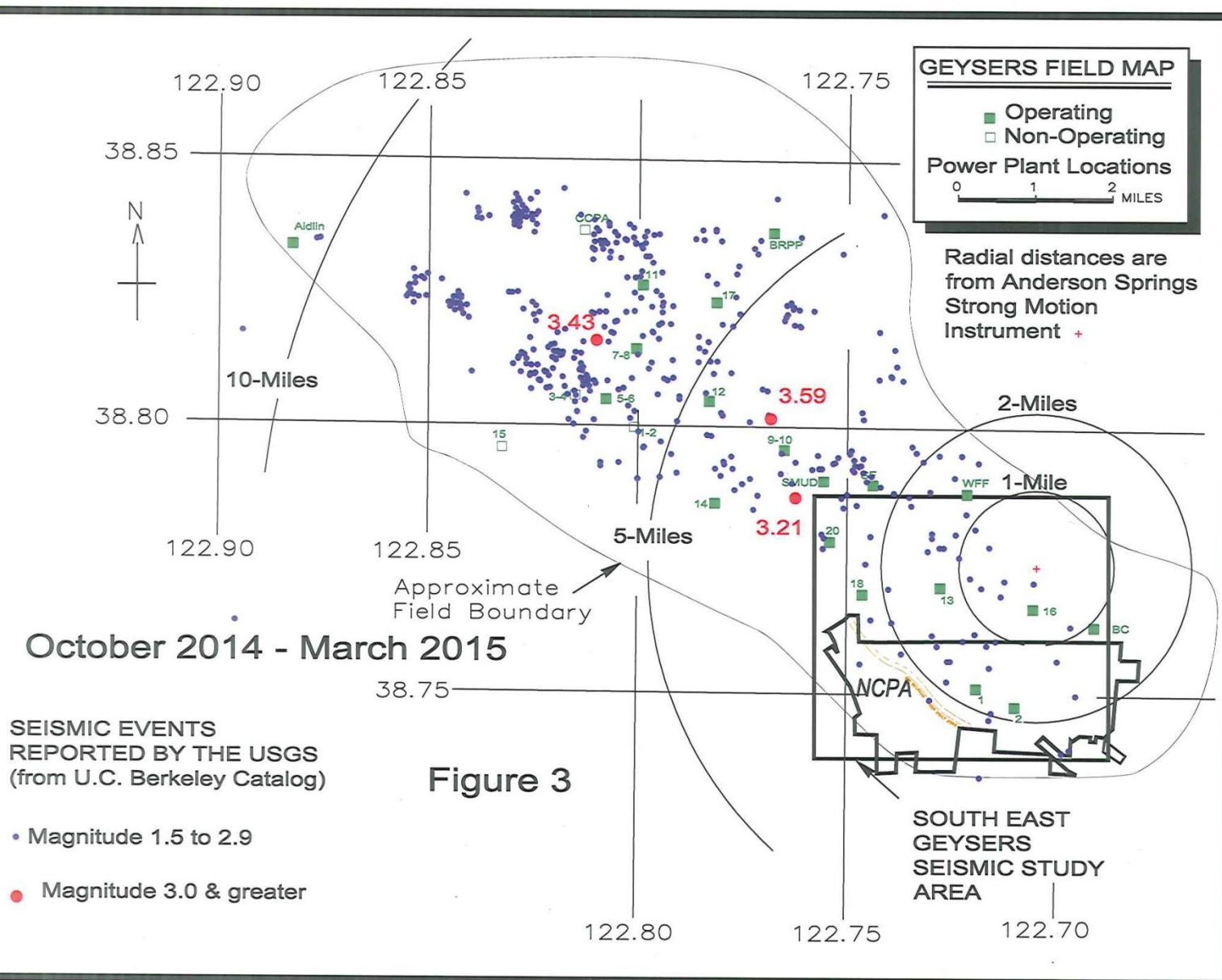


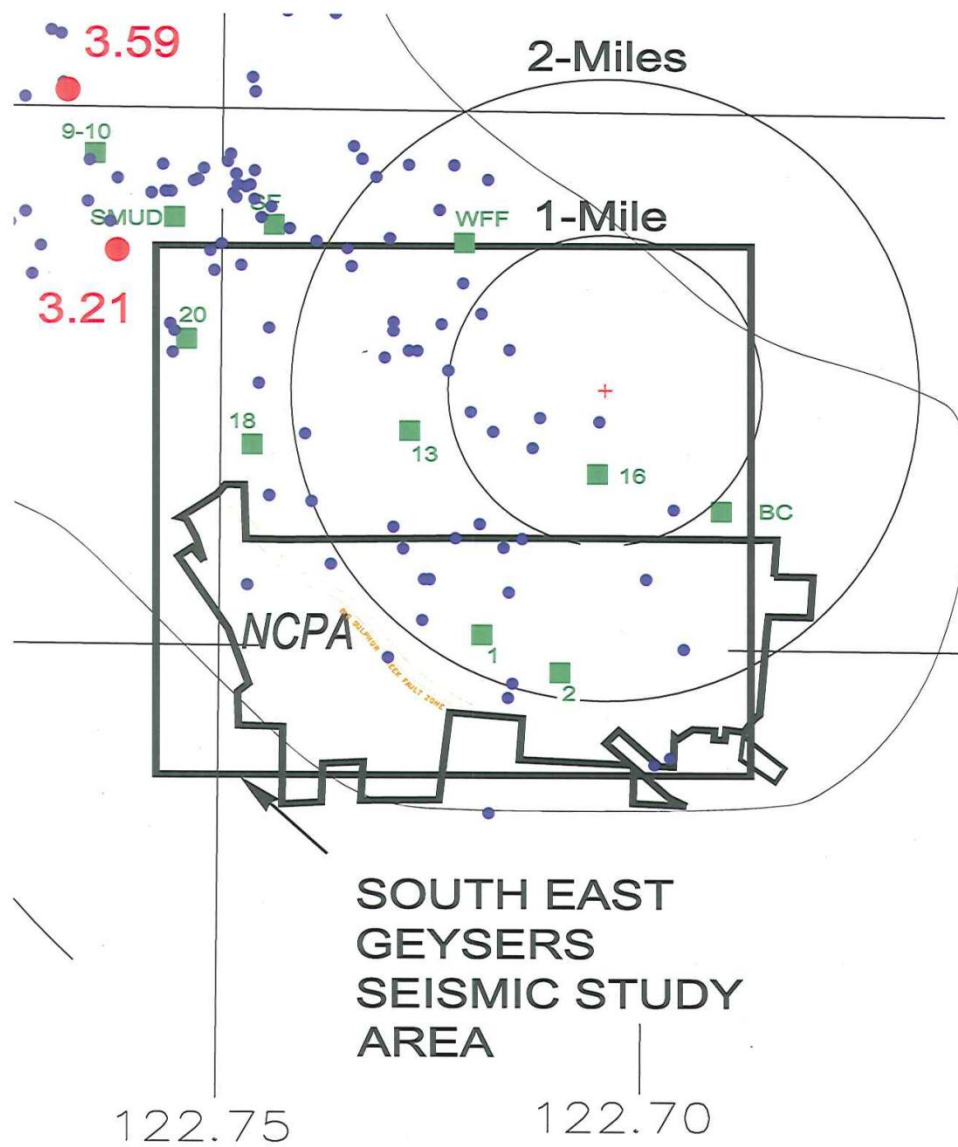
# SE Geysers Production and Injection

Figure 6

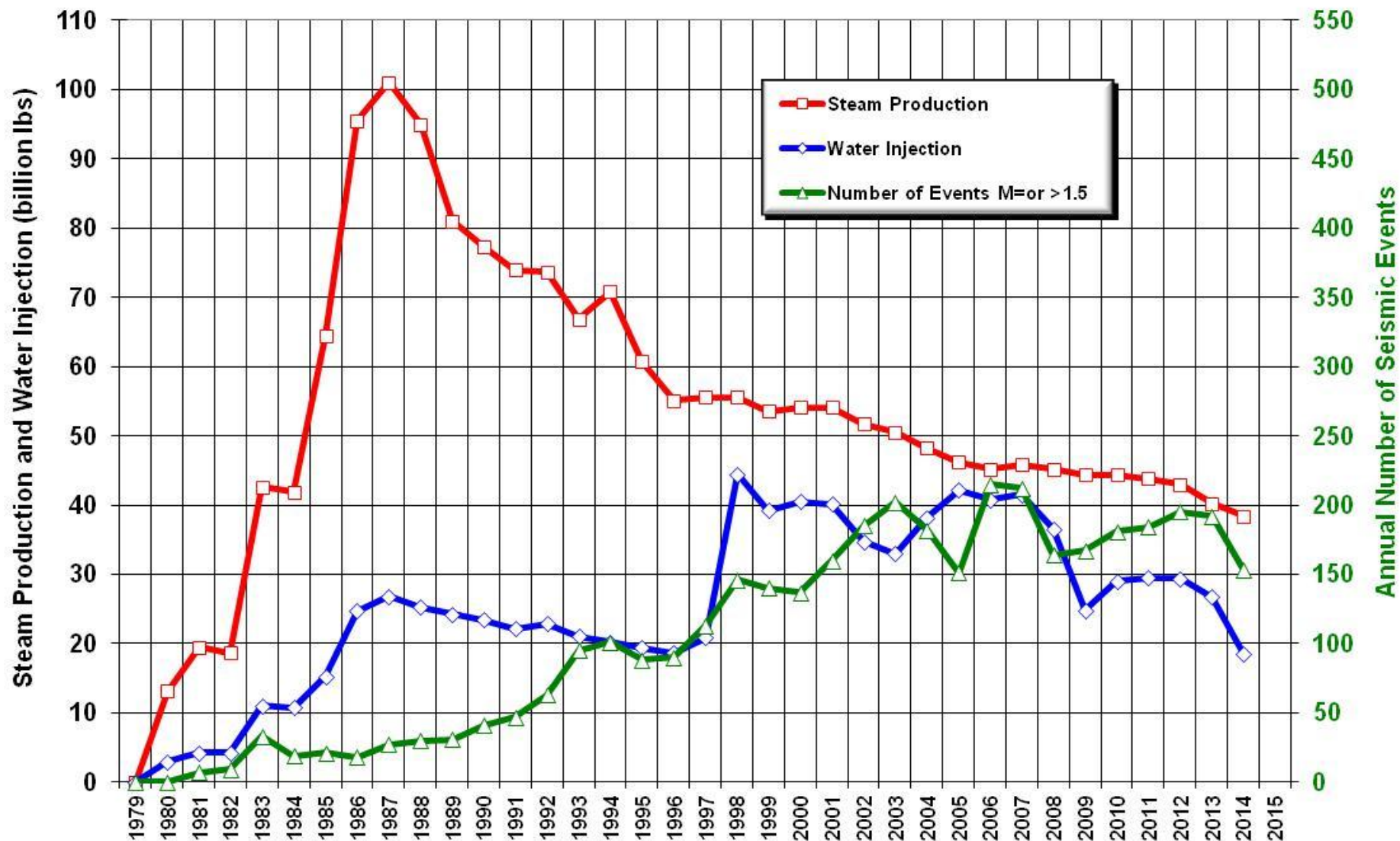




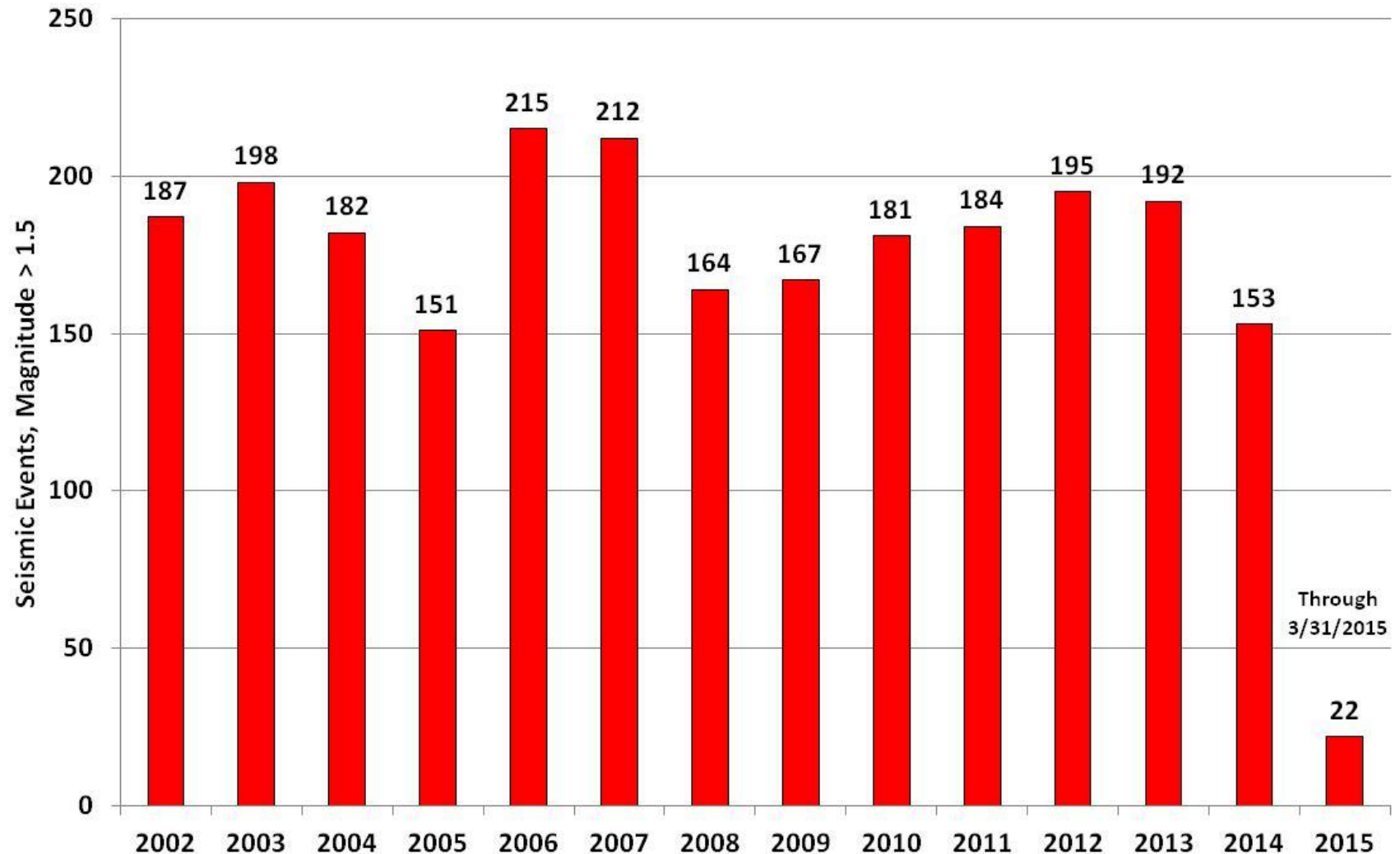




## Comparison of Annual Steam Production, Water Injection and Recorded Seismicity in the SE Geysers Area

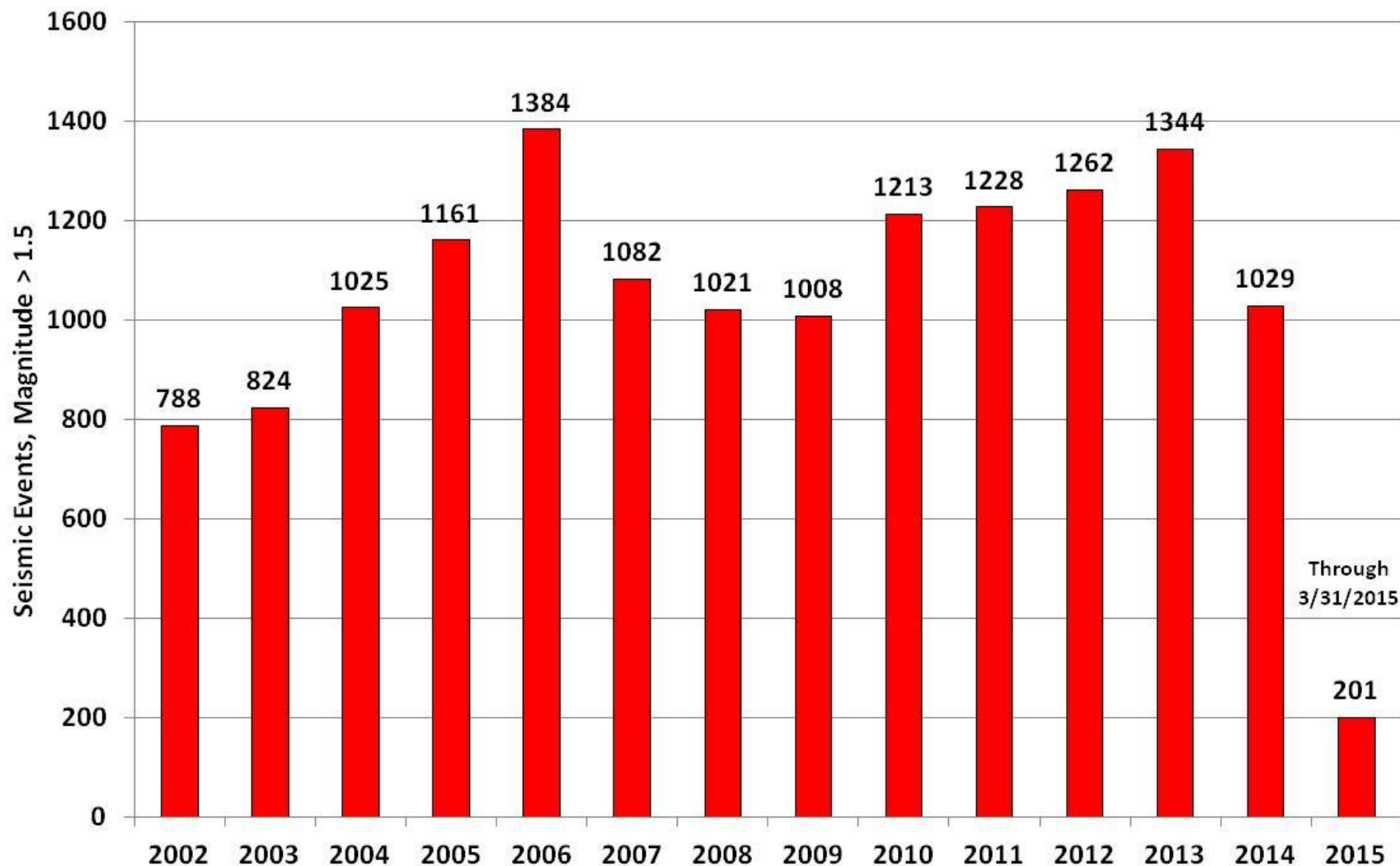


# **Southeast Geysers - Historical Seismic Activity** **Magnitude > 1.5** **Years 2002 - 2015**





# The Geysers (KGRA) - Historical Seismic Activity Magnitude > 1.5 Years 2002 - 2015



## **Summary**

- **Average SEGEP injection – 2.95 million GPD**
- **Reduced flow are due to drought**
  - **April 2014 – May 1 2015 Reduced flows due to drought**
  - **May 1, 2015 – Resume normal flow**
- **Steam production is slightly down from previous 6 months.**
- **Water injection is moderately up from the previous 6 months.**
- **Seismic activity is significantly down from the previous 6 months.**

## **Summary**

- **In SE Geysers, Oct 1, 2014 – March 1, 2015**
  - **A decrease from 78 to 54 seismic events with magnitude 1.5 or greater from the previous 6 months**
  - **No seismic events with magnitude 3.0 or greater**