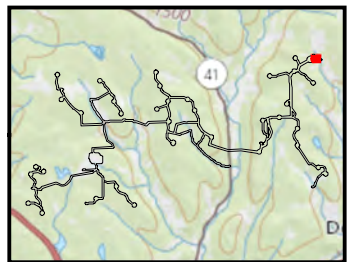


Bluestone Wind Project

Town of Windsor and Sanford, Broome County, New York

Appendix WW: Wetland Impact Drawing
Sheet 1 of 46

- Access Road
- Wetland Continues
- Point of Interconnection Substation
- Permanent Wetland Impact
- Temporary Limit of Disturbance
- Permanent Limit of Disturbance
- Perennial Stream
- PEM Delineated Wetland
- PSS Delineated Wetland



Notes: 1. Basemap: NYSDOP "2014" orthoimagery map service. 2. This map was generated in ArcMap on September 14, 2018. 3. This is a color graphic. Reproduction in grayscale may misrepresent the data.



www.edrdpc.com

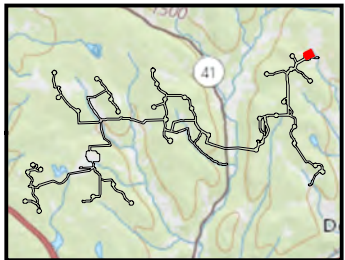


Bluestone Wind Project

Town of Windsor and Sanford, Broome County, New York

Appendix WW: Wetland Impact Drawing
Sheet 2 of 46

- Point of Interconnection Substation
- Collection Substation
- Temporary Stream Impact
- Permanent Stream Impact
- Temporary Wetland Impact
- Temporary Limit of Disturbance
- Permanent Limit of Disturbance
- Ephemeral Stream
- Perennial Stream
- PSS Delineated Wetland



Notes: 1. Basemap: NYSDOP "2014" orthoimagery map service. 2. This map was generated in ArcMap on September 14, 2018. 3. This is a color graphic. Reproduction in grayscale may misrepresent the data.



www.edrdpc.com

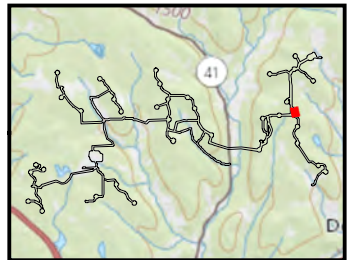


Bluestone Wind Project

Town of Windsor and
Sanford, Broome County,
New York

Appendix WW: Wetland
Impact Drawing
Sheet 3 of 46

- Access Road
- Collection Line
- Temporary Wetland Impact
- Temporary Limit of Disturbance
- Permanent Limit of Disturbance
- PEM Delineated Wetland
- PFO Delineated Wetland



Notes: 1. Basemap: NYSDOP "2014" orthoimagery map service. 2. This map was generated in ArcMap on September 14, 2018. 3. This is a color graphic. Reproduction in grayscale may misrepresent the data.



www.edrdpc.com

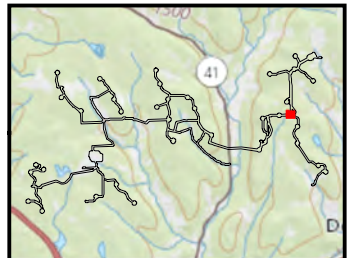


Bluestone Wind Project

Town of Windsor and Sanford, Broome County, New York

Appendix WW: Wetland Impact Drawing
Sheet 4 of 46

- Access Road
- Collection Line
- Wetland Continues
- Temporary Wetland Impact
- Permanent Wetland Impact
- Temporary Limit of Disturbance
- Permanent Limit of Disturbance
- PFO Delineated Wetland



Notes: 1. Basemap: NYSDOP "2014" orthoimagery map service. 2. This map was generated in ArcMap on September 14, 2018. 3. This is a color graphic. Reproduction in grayscale may misrepresent the data.



Bluestone Wind Project

Town of Windsor and Sanford, Broome County, New York

Appendix WW: Wetland Impact Drawing
Sheet 5 of 46

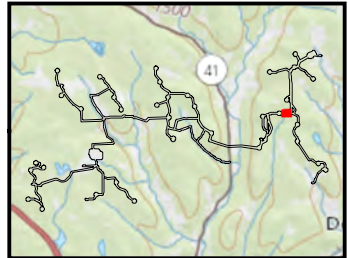
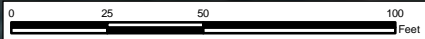
- Access Road
- Collection Line
- Stream Continues
- Wetland Continues
- Temporary Stream Impact
- Temporary Limit of Disturbance
- Permanent Limit of Disturbance
- Ephemeral Stream
- PFO Delineated Wetland

Stream 5E - R6
18 lft (111 sq.ft.) Temporary Impact

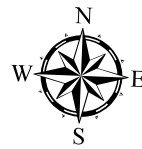
Wetland EE

Stream 5E

Scale - 1"=50'



Notes: 1. Basemap: NYSDOP "2014" orthoimagery map service. 2. This map was generated in ArcMap on September 14, 2018. 3. This is a color graphic. Reproduction in grayscale may misrepresent the data.



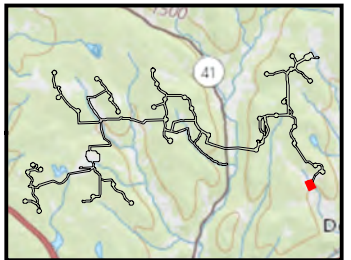
www.edrdpc.com

Bluestone Wind Project

Town of Windsor and Sanford, Broome County, New York

Appendix WW: Wetland Impact Drawing
Sheet 6 of 46

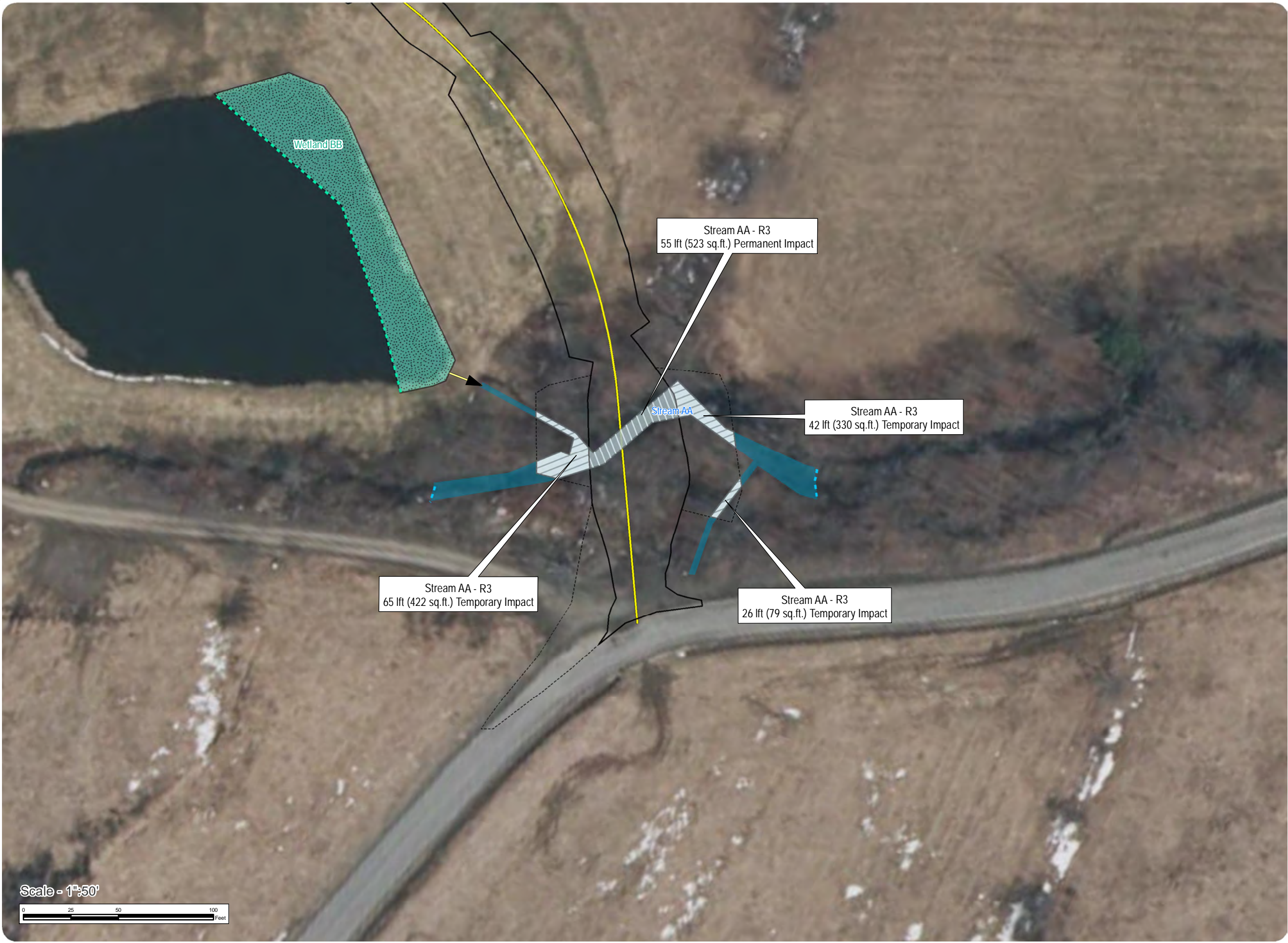
- Access Road
- Stream Continues
- Wetland Continues
- Culvert
- Temporary Stream Impact
- Permanent Stream Impact
- Temporary Limit of Disturbance
- Permanent Limit of Disturbance
- Perennial Stream
- POW



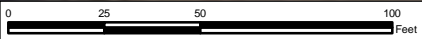
Notes: 1. Basemap: NYSDOP "2014" orthoimagery map service. 2. This map was generated in ArcMap on September 14, 2018. 3. This is a color graphic. Reproduction in grayscale may misrepresent the data.



www.edrdpc.com



Scale - 1"=50'

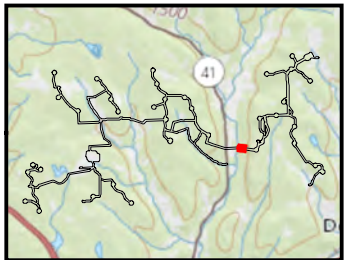


Bluestone Wind Project

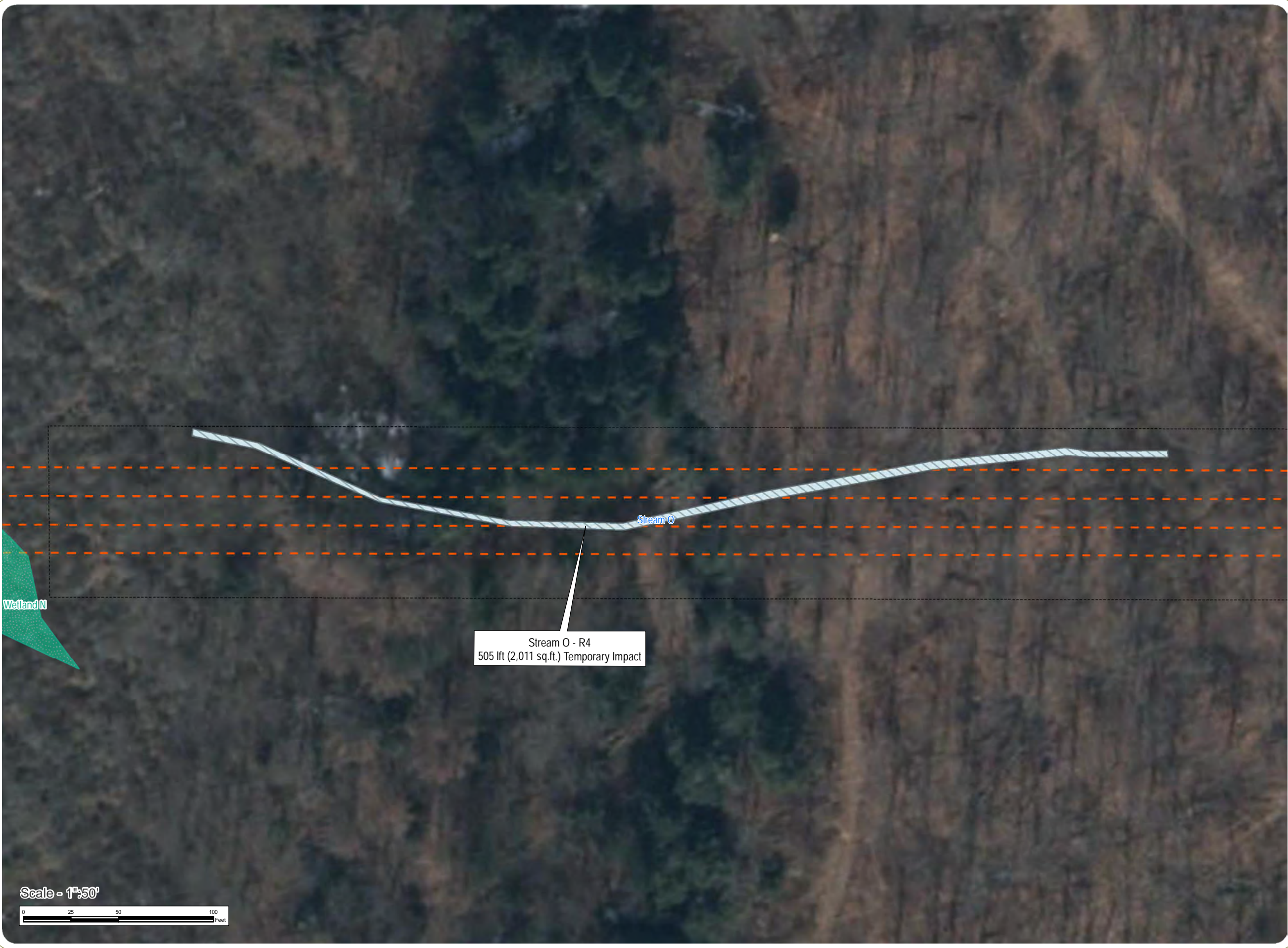
Town of Windsor and
Sanford, Broome County,
New York

Appendix WW: Wetland
Impact Drawing
Sheet 7 of 46

- Collection Line
- Temporary Stream Impact
- Temporary Limit of Disturbance
- Intermittent Stream
- PEM Delineated Wetland



Notes: 1. Basemap: NYSDOP "2014" orthoimagery map service. 2. This map was generated in ArcMap on September 14, 2018. 3. This is a color graphic. Reproduction in grayscale may misrepresent the data.



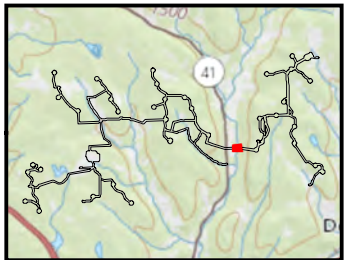
Bluestone Wind Project

Town of Windsor and Sanford, Broome County, New York

Appendix WW: Wetland Impact Drawing
Sheet 8 of 46



- Collection Line
- Stream Continues
- Wetland Continues
- Temporary Stream Impact
- Temporary Limit of Disturbance
- Intermittent Stream
- Perennial Stream
- PEM Delineated Wetland



Notes: 1. Basemap: NYSDOP "2014" orthoimagery map service. 2. This map was generated in ArcMap on September 14, 2018. 3. This is a color graphic. Reproduction in grayscale may misrepresent the data.



www.edrdpc.com

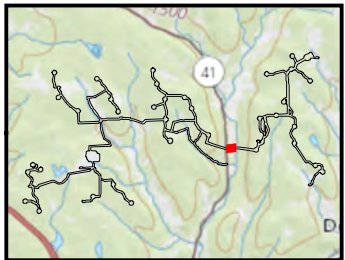
Bluestone Wind Project

Town of Windsor and
Sanford, Broome County,
New York

Appendix WW: Wetland
Impact Drawing
Sheet 9 of 46



- Collection Line
- Wetland Continues
- Perennial Stream
- PEM Delineated Wetland



Notes: 1. Basemap: NYSDOP "2014" orthoimagery map service. 2. This map was generated in ArcMap on September 14, 2018. 3. This is a color graphic. Reproduction in grayscale may misrepresent the data.

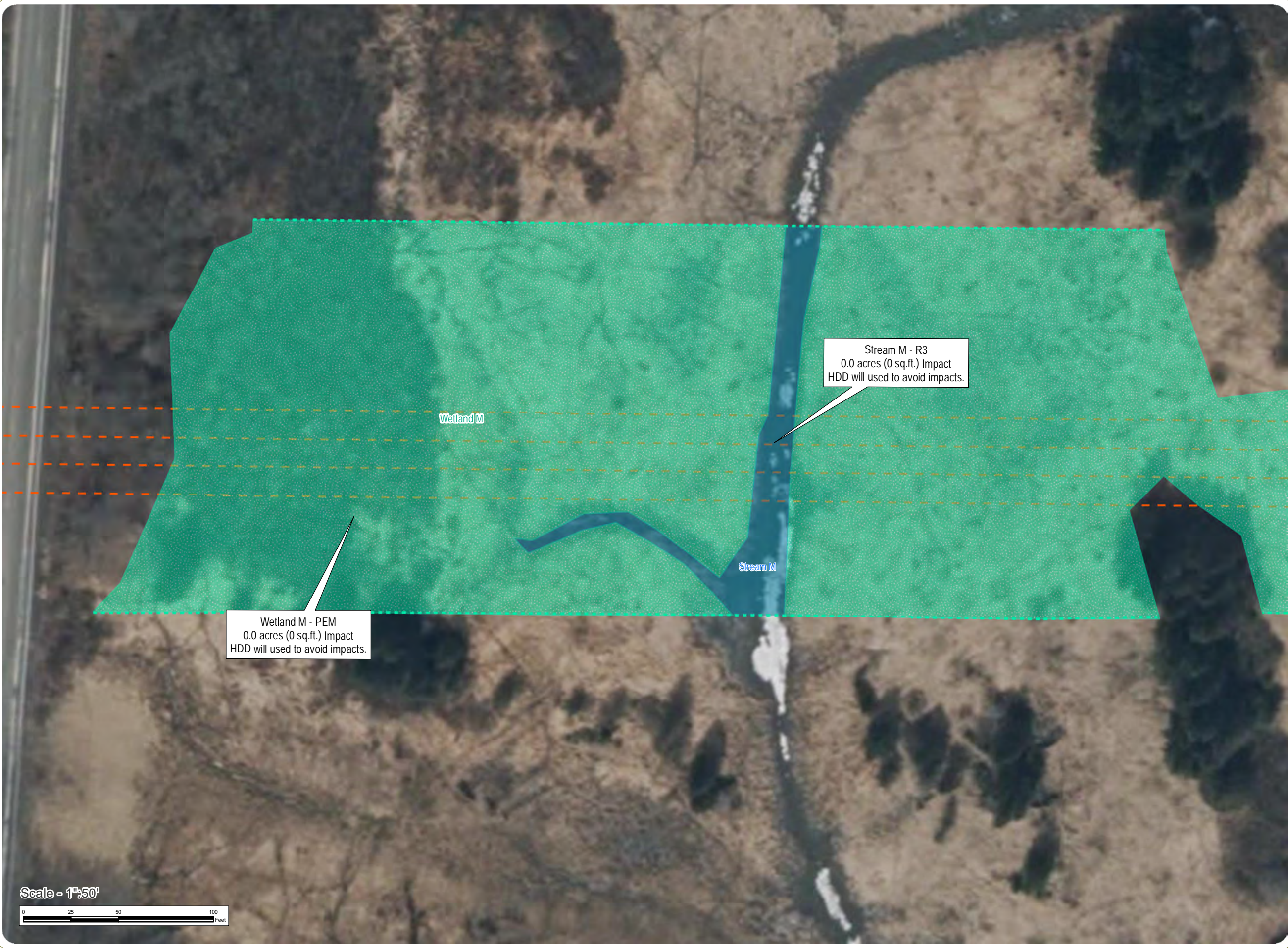


www.edrdpc.com

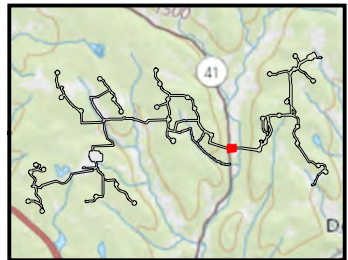
Bluestone Wind Project

Town of Windsor and Sanford, Broome County, New York

Appendix WW: Wetland Impact Drawing
Sheet 10 of 46



- Collection Line
- Wetland Continues
- Perennial Stream
- PEM Delineated Wetland



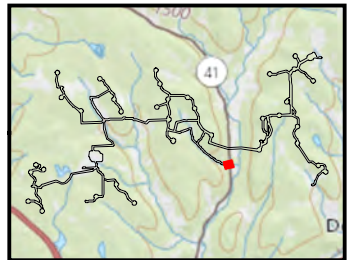
Notes: 1. Basemap: NYSDOP "2014" orthoimagery map service. 2. This map was generated in ArcMap on September 14, 2018. 3. This is a color graphic. Reproduction in grayscale may misrepresent the data.

Bluestone Wind Project

Town of Windsor and Sanford, Broome County, New York

Appendix WW: Wetland Impact Drawing
Sheet 11 of 46

- Access Road
- Stream Continues
- Culvert
- Temporary Stream Impact
- Permanent Stream Impact
- Temporary Limit of Disturbance
- Permanent Limit of Disturbance
- Perennial Stream



Notes: 1. Basemap: NYSDOP "2014" orthoimagery map service. 2. This map was generated in ArcMap on September 14, 2018. 3. This is a color graphic. Reproduction in grayscale may misrepresent the data.



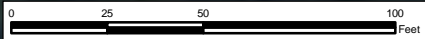
www.edrdpc.com

Stream R - R3
53 lft (449 sq.ft.) Permanent Impact

Stream R - R3
9 lft (16 sq.ft.) Permanent Impact

Stream R - R3
91 lft (618 sq.ft.) Temporary Impact

Scale - 1"=50'

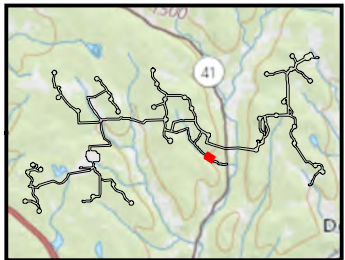


Bluestone Wind Project

Town of Windsor and Sanford, Broome County, New York

Appendix WW: Wetland Impact Drawing
Sheet 12 of 46

- Access Road
- Culvert
- Temporary Stream Impact
- Permanent Stream Impact
- Permanent Wetland Impact
- Temporary Limit of Disturbance
- Permanent Limit of Disturbance
- Intermittent Stream
- Perennial Stream
- PFO Delineated Wetland



Notes: 1. Basemap: NYSDOP "2014" orthoimagery map service. 2. This map was generated in ArcMap on September 14, 2018. 3. This is a color graphic. Reproduction in grayscale may misrepresent the data.



www.edrdpc.com

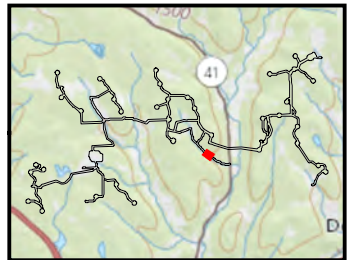
Bluestone Wind Project

Town of Windsor and Sanford, Broome County, New York

Appendix WW: Wetland Impact Drawing
Sheet 13 of 46



- Access Road
- Culvert
- Temporary Stream Impact
- Permanent Stream Impact
- Temporary Limit of Disturbance
- Permanent Limit of Disturbance
- Intermittent Stream
- Perennial Stream



Notes: 1. Basemap: NYSDOP "2014" orthoimagery map service. 2. This map was generated in ArcMap on September 14, 2018. 3. This is a color graphic. Reproduction in grayscale may misrepresent the data.



www.edrdpc.com

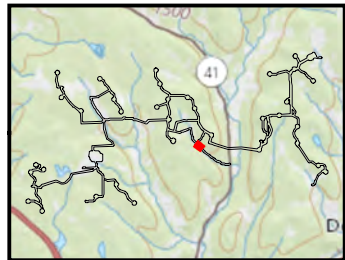
Bluestone Wind Project

Town of Windsor and Sanford, Broome County, New York

Appendix WW: Wetland Impact Drawing
Sheet 14 of 46

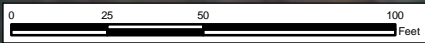


- Access Road
- Stream Continues
- Culvert
- Temporary Stream Impact
- Permanent Stream Impact
- Temporary Limit of Disturbance
- Permanent Limit of Disturbance
- Intermittent Stream
- Perennial Stream



Notes: 1. Basemap: NYSDOP "2014" orthoimagery map service. 2. This map was generated in ArcMap on September 14, 2018. 3. This is a color graphic. Reproduction in grayscale may misrepresent the data.

Scale - 1"=50'



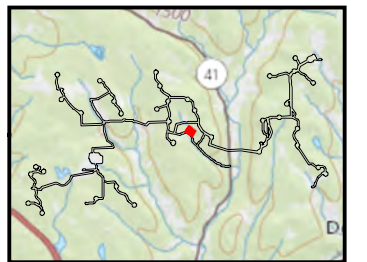
www.edrdpc.com

Bluestone Wind Project

Town of Windsor and
Sanford, Broome County,
New York

Appendix WW: Wetland
Impact Drawing
Sheet 15 of 46

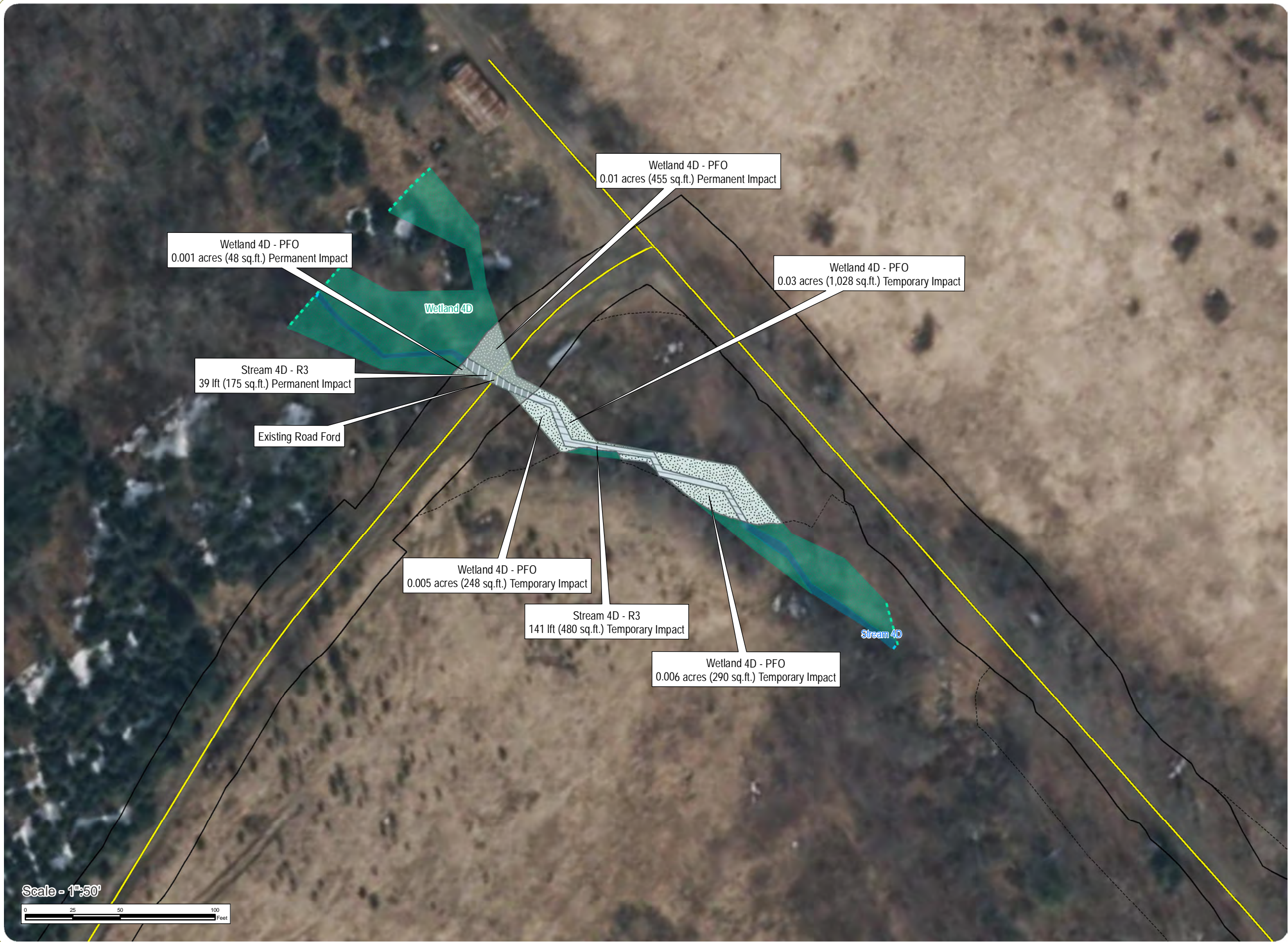
- Access Road
- Stream Continues
- Wetland Continues
- Temporary Stream Impact
- Permanent Stream Impact
- Temporary Wetland Impact
- Permanent Wetland Impact
- Temporary Limit of Disturbance
- Permanent Limit of Disturbance
- Perennial Stream
- PFO Delineated Wetland



Notes: 1. Basemap: NYSDOP "2014" orthoimagery map service. 2. This map was generated in ArcMap on September 14, 2018. 3. This is a color graphic. Reproduction in grayscale may misrepresent the data.



www.edrdpc.com



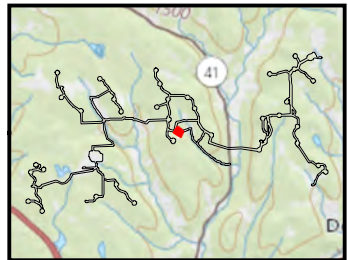
Bluestone Wind Project

Town of Windsor and Sanford, Broome County, New York

Appendix WW: Wetland Impact Drawing
Sheet 16 of 46



- Access Road
- Wetland Continues
- Temporary Wetland Impact
- Permanent Wetland Impact
- Temporary Limit of Disturbance
- Permanent Limit of Disturbance
- PEM Delineated Wetland



Notes: 1. Basemap: NYSDOP "2014" orthoimagery map service. 2. This map was generated in ArcMap on September 14, 2018. 3. This is a color graphic. Reproduction in grayscale may misrepresent the data.



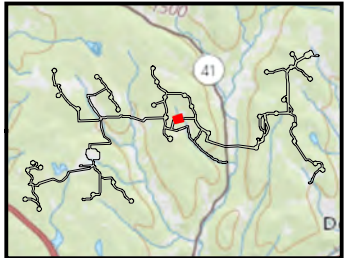
www.edrdpc.com

Bluestone Wind Project

Town of Windsor and
Sanford, Broome County,
New York

Appendix WW: Wetland
Impact Drawing
Sheet 17 of 46

- Collection Line
- Stream Continues
- Wetland Continues
- Temporary Stream Impact
- Temporary Limit of Disturbance
- Intermittent Stream
- PFO Delineated Wetland



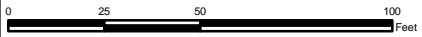
Notes: 1. Basemap: NYSDOP "2014" orthoimagery map service. 2. This map was generated in ArcMap on September 14, 2018. 3. This is a color graphic. Reproduction in grayscale may misrepresent the data.



www.edrdpc.com



Scale - 1"=50'



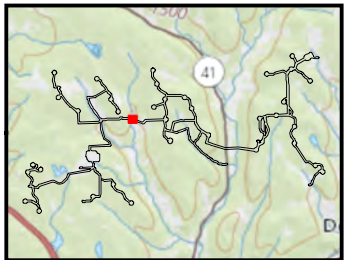
Bluestone Wind Project

Town of Windsor and
Sanford, Broome County,
New York

Appendix WW: Wetland
Impact Drawing
Sheet 18 of 46



- Collection Line
- Stream Continues
- Wetland Continues
- Culvert
- Temporary Limit of Disturbance
- Perennial Stream
- PEM Delineated Wetland



Notes: 1. Basemap: NYSDOP "2014" orthoimagery map service. 2. This map was generated in ArcMap on September 14, 2018. 3. This is a color graphic. Reproduction in grayscale may misrepresent the data.



www.edrdpc.com

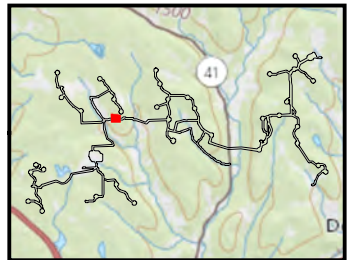
Bluestone Wind Project

Town of Windsor and Sanford, Broome County, New York

Appendix WW: Wetland Impact Drawing
Sheet 19 of 46



- Collection Line
- Temporary Wetland Impact
- Temporary Limit of Disturbance
- PFO Delineated Wetland



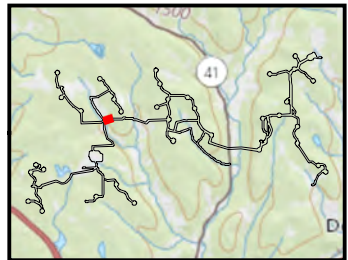
Notes: 1. Basemap: NYSDOP "2014" orthoimagery map service. 2. This map was generated in ArcMap on September 14, 2018. 3. This is a color graphic. Reproduction in grayscale may misrepresent the data.



Bluestone Wind Project

Town of Windsor and
Sanford, Broome County,
New York

Appendix WW: Wetland
Impact Drawing
Sheet 20 of 46



Notes: 1. Basemap: NYSDOP "2014" orthoimagery map service. 2. This map was generated in ArcMap on September 14, 2018. 3. This is a color graphic. Reproduction in grayscale may misrepresent the data.



www.edrdpc.com

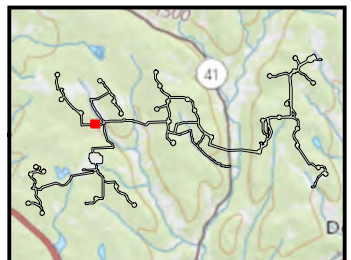
Bluestone Wind Project

Town of Windsor and Sanford, Broome County, New York

Appendix WW: Wetland Impact Drawing
Sheet 22 of 46



- Access Road
- Collection Line
- Temporary Wetland Impact
- Permanent Wetland Impact
- Temporary Limit of Disturbance
- Permanent Limit of Disturbance
- PEM Delineated Wetland
- PFO Delineated Wetland

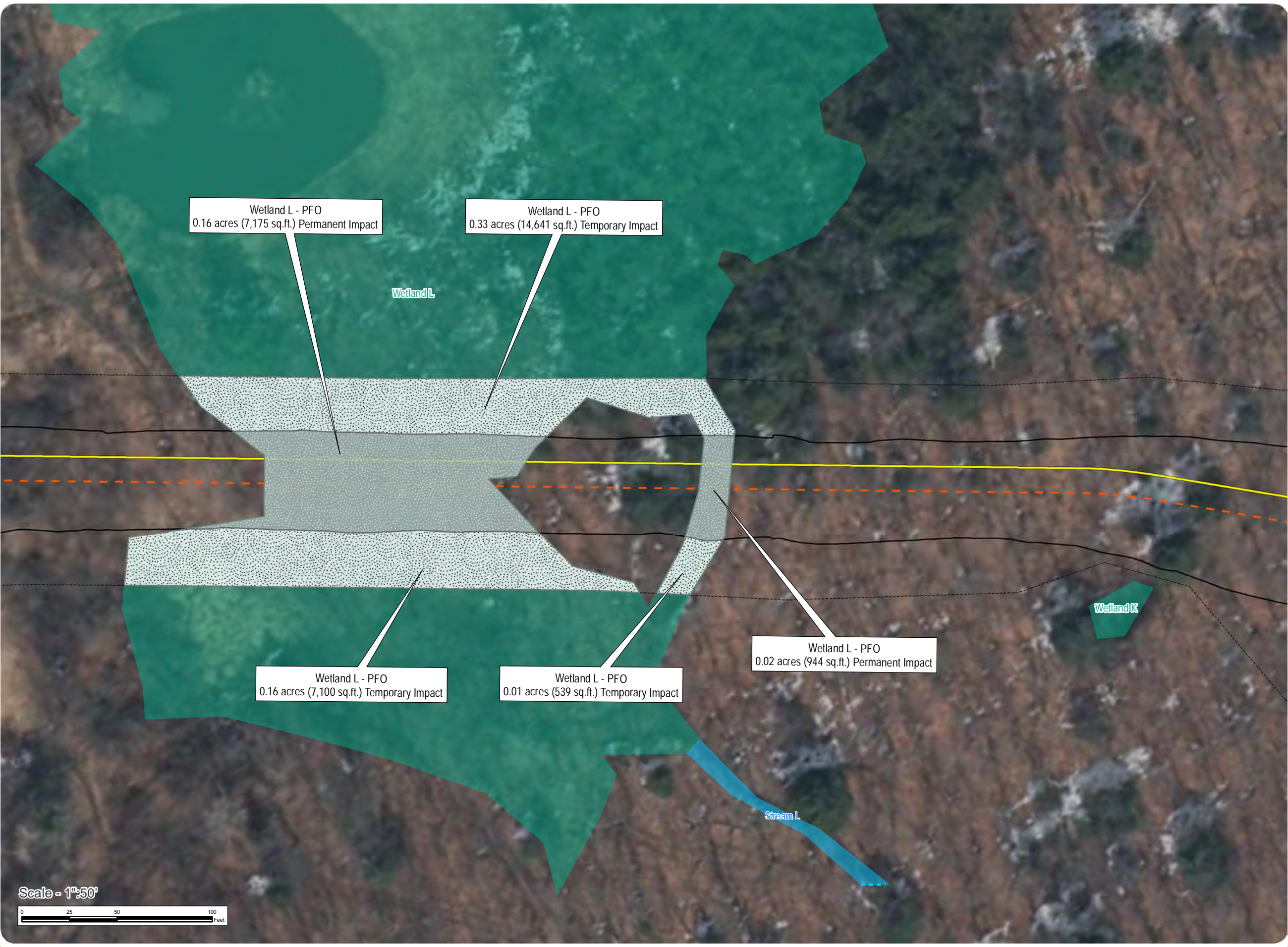


Notes: 1. Basemap: NYSDOP "2014" orthoimagery map service. 2. This map was generated in ArcMap on September 14, 2018. 3. This is a color graphic. Reproduction in grayscale may misrepresent the data.

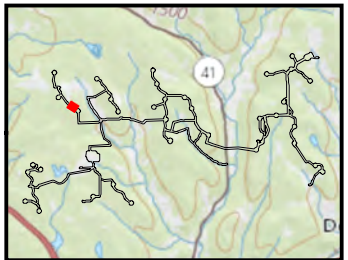
Bluestone Wind Project

Town of Windsor and Sanford, Broome County, New York

Appendix WW: Wetland Impact Drawing
Sheet 23 of 46

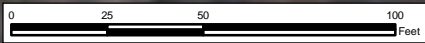


- Access Road
- Collection Line
- Stream Continues
- Temporary Wetland Impact
- Permanent Wetland Impact
- Temporary Limit of Disturbance
- Permanent Limit of Disturbance
- Intermittent Stream
- PFO Delineated Wetland



Notes: 1. Basemap: NYSDOP "2014" orthoimagery map service. 2. This map was generated in ArcMap on September 14, 2018. 3. This is a color graphic. Reproduction in grayscale may misrepresent the data.

Scale - 1"=50'

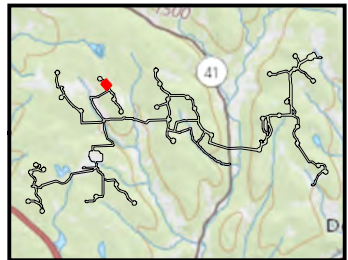


www.edrdpc.com

Bluestone Wind Project

Town of Windsor and Sanford, Broome County, New York

Appendix WW: Wetland Impact Drawing
Sheet 24 of 46



Notes: 1. Basemap: NYSDOP "2014" orthoimagery map service. 2. This map was generated in ArcMap on September 14, 2018. 3. This is a color graphic. Reproduction in grayscale may misrepresent the data.



www.edrdpc.com

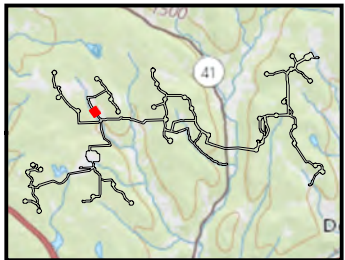
Bluestone Wind Project

Town of Windsor and Sanford, Broome County, New York

Appendix WW: Wetland Impact Drawing
Sheet 25 of 46



- Collection Line
- Wetland Continues
- Culvert
- Temporary Wetland Impact
- Temporary Limit of Disturbance
- Perennial Stream
- PEM Delineated Wetland



Notes: 1. Basemap: NYSDOP "2014" orthoimagery map service. 2. This map was generated in ArcMap on September 14, 2018. 3. This is a color graphic. Reproduction in grayscale may misrepresent the data.

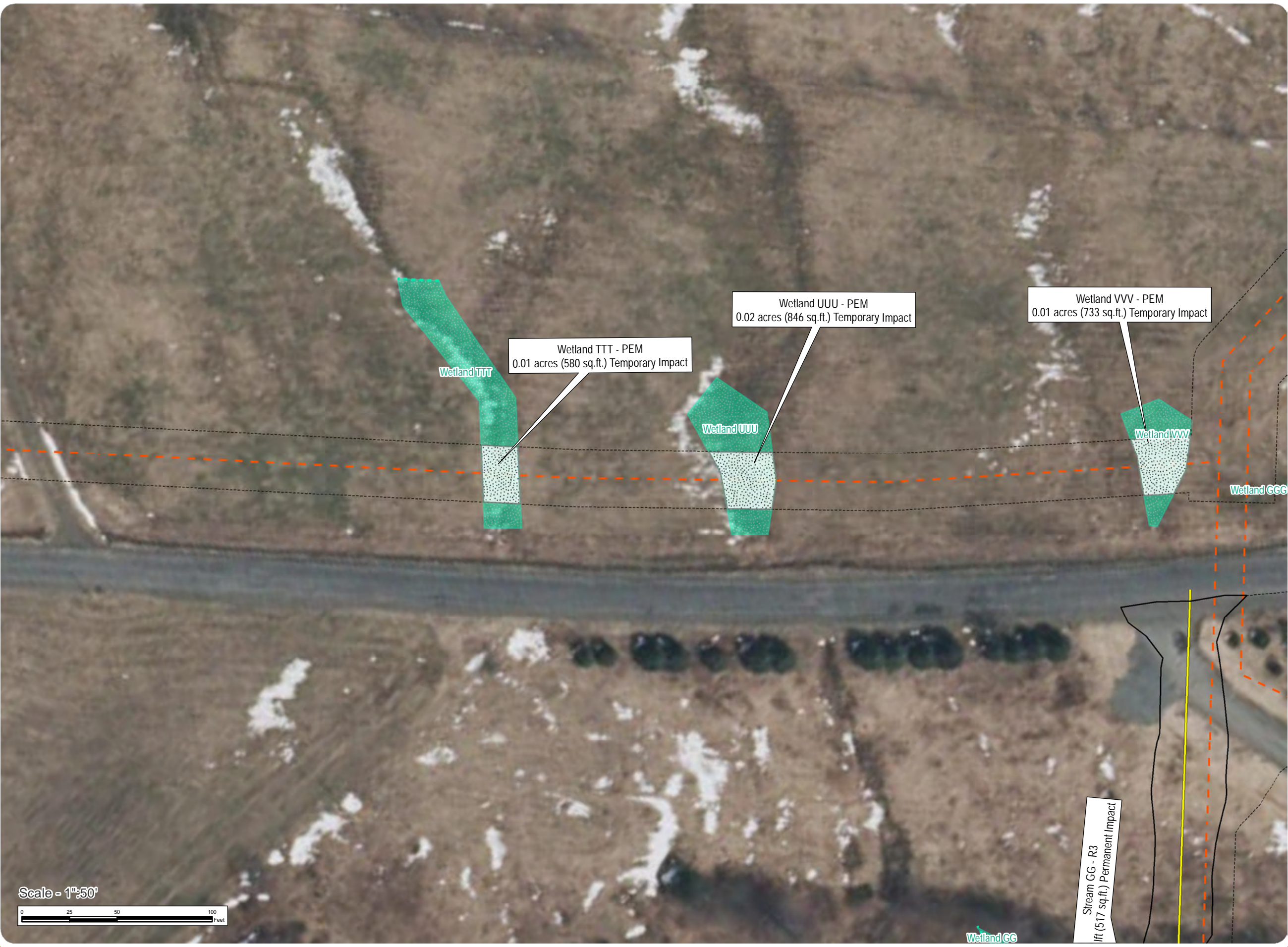


www.edrdpc.com

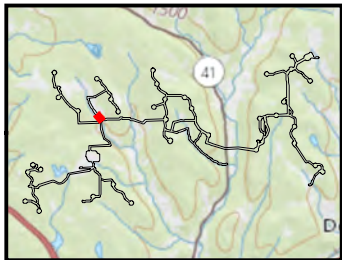
Bluestone Wind Project

Town of Windsor and
Sanford, Broome County,
New York

Appendix WW: Wetland
Impact Drawing
Sheet 26 of 46



- Access Road
- Collection Line
- Wetland Continues
- Temporary Wetland Impact
- Temporary Limit of Disturbance
- Permanent Limit of Disturbance
- PEM Delineated Wetland



Notes: 1. Basemap: NYSDOP "2014" orthoimagery map service. 2. This map was generated in ArcMap on September 14, 2018. 3. This is a color graphic. Reproduction in grayscale may misrepresent the data.



www.edrdpc.com

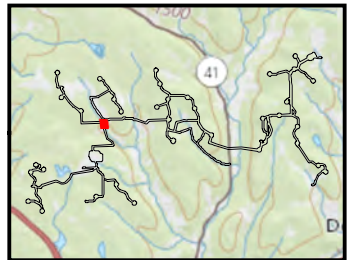
Bluestone Wind Project

Town of Windsor and Sanford, Broome County, New York

Appendix WW: Wetland Impact Drawing

Sheet 27 of 46

- Collection Line
- Stream Continues
- Wetland Continues
- Culvert
- Temporary Stream Impact
- Permanent Stream Impact
- Temporary Wetland Impact
- Permanent Wetland Impact
- Temporary Limit of Disturbance
- Permanent Limit of Disturbance
- Perennial Stream
- PEM Delineated Wetland



Notes: 1. Basemap: NYSDOP "2014" orthoimagery map service. 2. This map was generated in ArcMap on September 14, 2018. 3. This is a color graphic. Reproduction in grayscale may misrepresent the data.



www.edrdpc.com

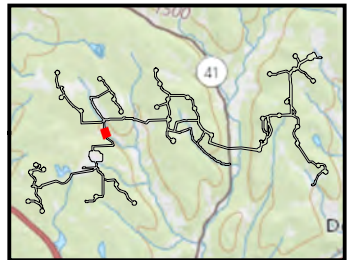
Bluestone Wind Project

Town of Windsor and
Sanford, Broome County,
New York

Appendix WW: Wetland
Impact Drawing
Sheet 28 of 46



- Collection Line
- Stream Continues
- Wetland Continues
- Temporary Stream Impact
- Temporary Wetland Impact
- Temporary Limit of Disturbance
- Perennial Stream
- PSS Delineated Wetland



Notes: 1. Basemap: NYSDOP "2014" orthoimagery map service. 2. This map was generated in ArcMap on September 14, 2018. 3. This is a color graphic. Reproduction in grayscale may misrepresent the data.



www.edrdpc.com

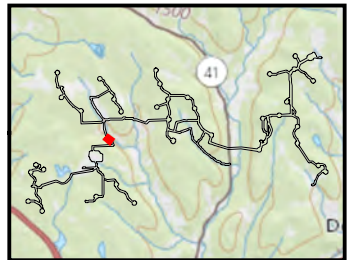
Bluestone Wind Project

Town of Windsor and Sanford, Broome County, New York

Appendix WW: Wetland Impact Drawing
Sheet 29 of 46



- Collection Line
- Wetland Continues
- Temporary Wetland Impact
- Temporary Limit of Disturbance
- PEM Delineated Wetland



Notes: 1. Basemap: NYSDOP "2014" orthoimagery map service. 2. This map was generated in ArcMap on September 14, 2018. 3. This is a color graphic. Reproduction in grayscale may misrepresent the data.



www.edrdpc.com

Bluestone Wind Project

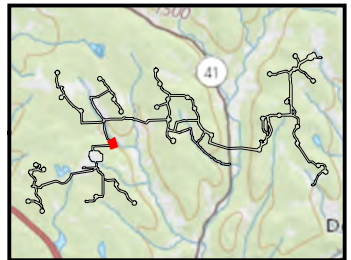
Town of Windsor and Sanford, Broome County, New York

Appendix WW: Wetland Impact Drawing
Sheet 30 of 46

Wetland ZZZ - PEM
0.32 acres (14,008 sq.ft.) Temporary Impact

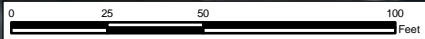
Wetland ZZZ

- Collection Line
- Wetland Continues
- Temporary Wetland Impact
- Temporary Limit of Disturbance
- PEM Delineated Wetland



Notes: 1. Basemap: NYSDOP "2014" orthoimagery map service. 2. This map was generated in ArcMap on September 14, 2018. 3. This is a color graphic. Reproduction in grayscale may misrepresent the data.

Scale - 1"=50'



www.edrdpc.com

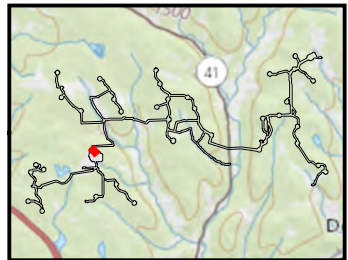
Bluestone Wind Project

Town of Windsor and Sanford, Broome County, New York

Appendix WW: Wetland Impact Drawing
Sheet 31 of 46



- Collection Line
- Stream Continues
- Wetland Continues
- Batch Plant
- Temporary Stream Impact
- Temporary Wetland Impact
- Temporary Limit of Disturbance
- Ephemeral Stream
- PEM Delineated Wetland



Notes: 1. Basemap: NYSDOP "2014" orthoimagery map service. 2. This map was generated in ArcMap on September 14, 2018. 3. This is a color graphic. Reproduction in grayscale may misrepresent the data.



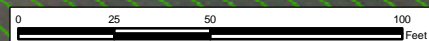
www.edrdpc.com

Wetland Z

Wetland V

Wetland V - PEM
0.03 acres (1427 sq.ft.) Temporary Impact

Scale - 1"=50'

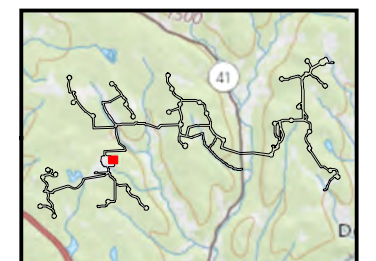


Bluestone Wind Project

Town of Windsor and
Sanford, Broome County,
New York

Appendix WW: Wetland
Impact Drawing
Sheet 32 of 46

- Wetland Continues
- Laydown Area
- Temporary Wetland Impact
- Temporary Limit of Disturbance
- PEM Delineated Wetland
- PFO Delineated Wetland



Notes: 1. Basemap: NYSDOP "2014" orthoimagery map service. 2. This map was generated in ArcMap on September 14, 2018. 3. This is a color graphic. Reproduction in grayscale may misrepresent the data.

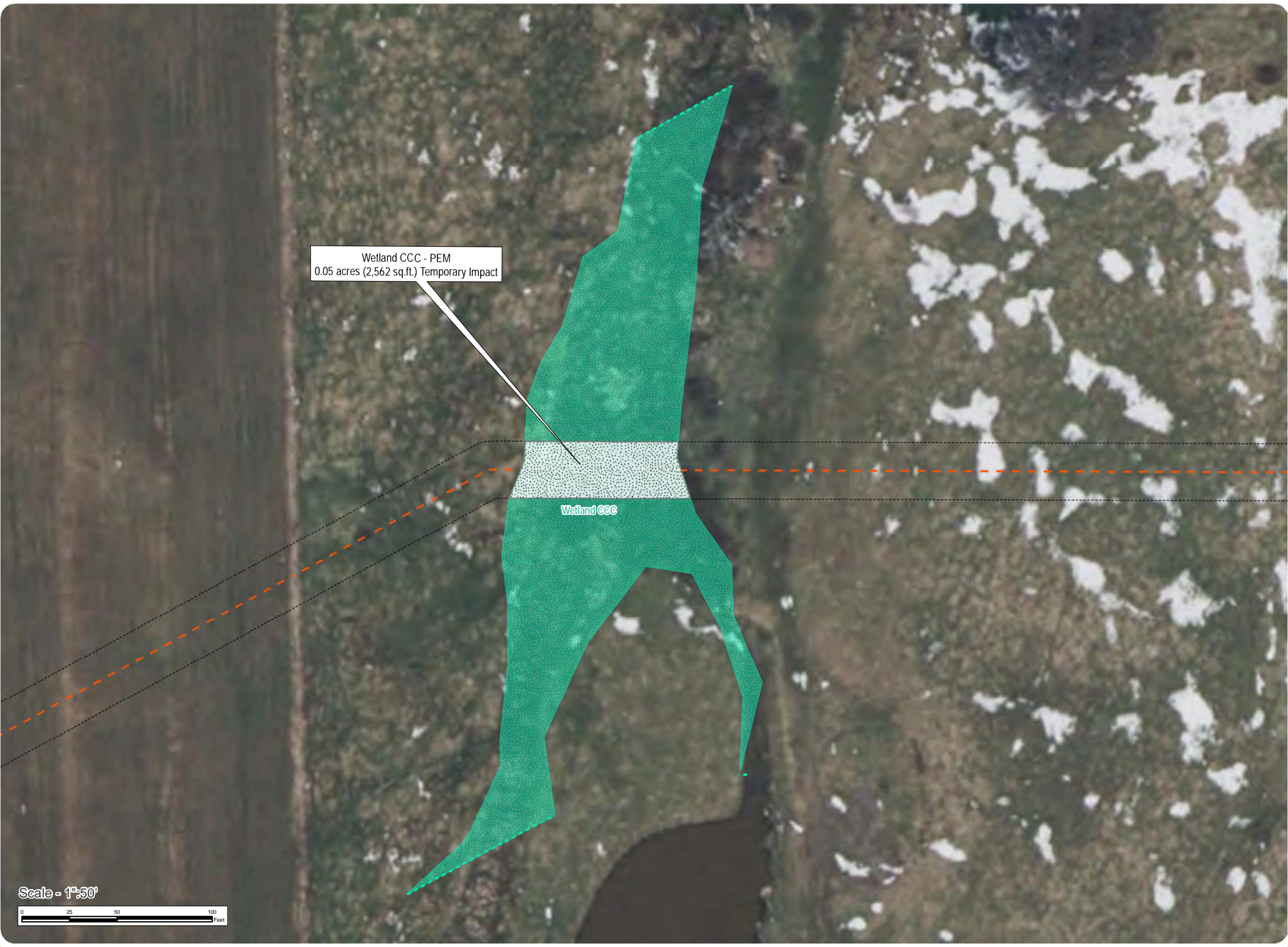


www.edrdpc.com

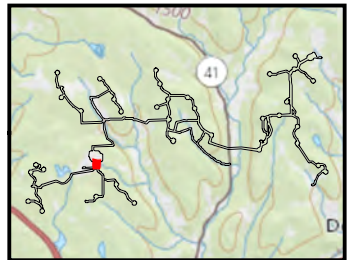
Bluestone Wind Project

Town of Windsor and Sanford, Broome County, New York

Appendix WW: Wetland Impact Drawing
Sheet 33 of 46

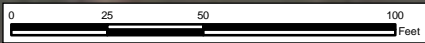


- Collection Line
- Wetland Continues
- Temporary Wetland Impact
- Temporary Limit of Disturbance
- PEM Delineated Wetland



Notes: 1. Basemap: NYSDOP "2014" orthoimagery map service. 2. This map was generated in ArcMap on September 14, 2018. 3. This is a color graphic. Reproduction in grayscale may misrepresent the data.

Scale - 1"=50'



www.edrdpc.com

Bluestone Wind Project

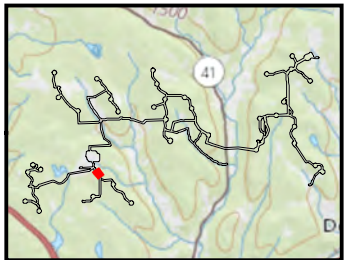
Town of Windsor and Sanford, Broome County, New York

Appendix WW: Wetland Impact Drawing
Sheet 34 of 46

Wetland AAA - PEM
0.02 acres (1,099 sq.ft.) Temporary Impact

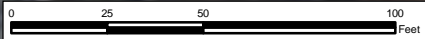
Wetland AAA

- Access Road
- Collection Line
- Temporary Wetland Impact
- Temporary Limit of Disturbance
- Permanent Limit of Disturbance
- PEM Delineated Wetland



Notes: 1. Basemap: NYSDOP "2014" orthoimagery map service. 2. This map was generated in ArcMap on September 14, 2018. 3. This is a color graphic. Reproduction in grayscale may misrepresent the data.

Scale - 1"=50'



www.edrdpc.com

Bluestone Wind Project

Town of Windsor and Sanford, Broome County, New York

Appendix WW: Wetland Impact Drawing
Sheet 35 of 46

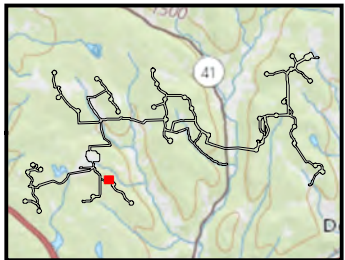
Wetland UU - PFO
0.01 acres (778 sq.ft.) Temporary Impact

Wetland UU

Wetland ZZ

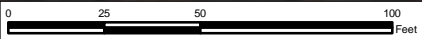
Wetland WW

- Access Road
- Collection Line
- Temporary Wetland Impact
- Temporary Limit of Disturbance
- Permanent Limit of Disturbance
- PFO Delineated Wetland



Notes: 1. Basemap: NYSDOP "2014" orthoimagery map service. 2. This map was generated in ArcMap on September 14, 2018. 3. This is a color graphic. Reproduction in grayscale may misrepresent the data.

Scale - 1"=50'



www.edrdpc.com

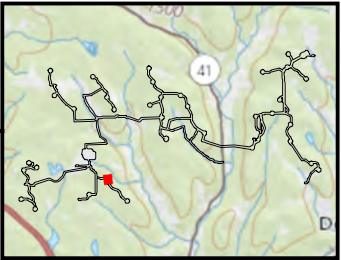
Bluestone Wind Project

Town of Windsor and Sanford, Broome County, New York

Appendix WW: Wetland Impact Drawing
Sheet 36 of 46

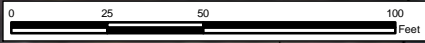


- Wind Turbine
- Access Road
- Collection Line
- Temporary Wetland Impact
- Temporary Limit of Disturbance
- Permanent Limit of Disturbance
- PFO Delineated Wetland



Notes: 1. Basemap: NYSDOP "2014" orthoimagery map service. 2. This map was generated in ArcMap on September 14, 2018. 3. This is a color graphic. Reproduction in grayscale may misrepresent the data.

Scale - 1"=50'

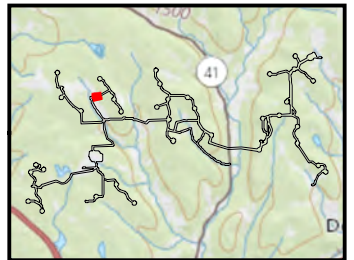


Bluestone Wind Project

Town of Windsor and
Sanford, Broome County,
New York

Appendix WW: Wetland
Impact Drawing
Sheet 37 of 46

- Access Road
- Collection Line
- Stream Continues
- Temporary Stream Impact
- Permanent Stream Impact
- Temporary Limit of Disturbance
- Permanent Limit of Disturbance
- Ephemeral Stream



Notes: 1. Basemap: NYSDOP "2014" orthoimagery map service. 2. This map was generated in ArcMap on September 14, 2018. 3. This is a color graphic. Reproduction in grayscale may misrepresent the data.



www.edrdpc.com

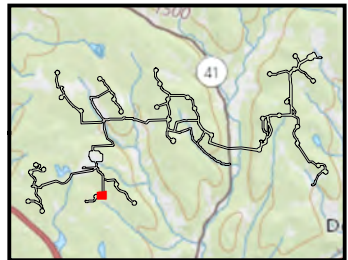


Bluestone Wind Project

Town of Windsor and Sanford, Broome County, New York

Appendix WW: Wetland Impact Drawing
Sheet 38 of 46

- Collection Line
- Stream Continues
- Wetland Continues
- Temporary Stream Impact
- Temporary Wetland Impact
- Temporary Limit of Disturbance
- Perennial Stream
- PEM Delineated Wetland
- PFO Delineated Wetland



Notes: 1. Basemap: NYSDOP "2014" orthoimagery map service. 2. This map was generated in ArcMap on September 14, 2018. 3. This is a color graphic. Reproduction in grayscale may misrepresent the data.



www.edrdpc.com



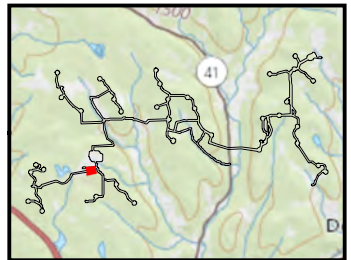
Bluestone Wind Project

Town of Windsor and
Sanford, Broome County,
New York

Appendix WW: Wetland
Impact Drawing
Sheet 39 of 46

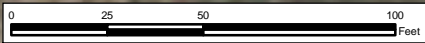


- Collection Line
- Wetland Continues
- Temporary Wetland Impact
- Temporary Limit of Disturbance
- Permanent Limit of Disturbance
- PEM Delineated Wetland



Notes: 1. Basemap: NYSDOP "2014" orthoimagery map service. 2. This map was generated in ArcMap on September 14, 2018. 3. This is a color graphic. Reproduction in grayscale may misrepresent the data.

Scale - 1"=50'



www.edrdpc.com

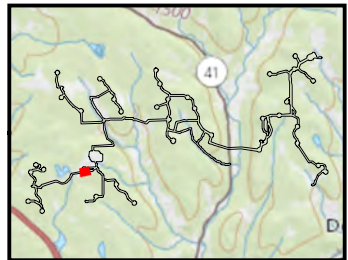
Bluestone Wind Project

Town of Windsor and Sanford, Broome County, New York

Appendix WW: Wetland Impact Drawing
Sheet 40 of 46



- Collection Line
- Wetland Continues
- Temporary Wetland Impact
- Temporary Limit of Disturbance
- PEM Delineated Wetland



Notes: 1. Basemap: NYSDOP "2014" orthoimagery map service. 2. This map was generated in ArcMap on September 14, 2018. 3. This is a color graphic. Reproduction in grayscale may misrepresent the data.



www.edrdpc.com

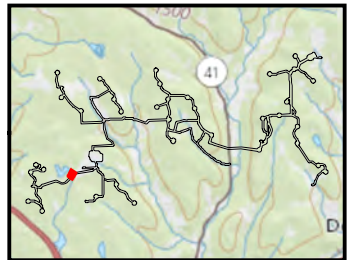
Bluestone Wind Project

Town of Windsor and Sanford, Broome County, New York

Appendix WW: Wetland Impact Drawing
Sheet 41 of 46



- Collection Line
- Stream Continues
- Wetland Continues
- Culvert
- Temporary Stream Impact
- Temporary Limit of Disturbance
- Perennial Stream
- PEM Delineated Wetland
- PFO Delineated Wetland



Notes: 1. Basemap: NYSDOP "2014" orthoimagery map service. 2. This map was generated in ArcMap on September 14, 2018. 3. This is a color graphic. Reproduction in grayscale may misrepresent the data.



www.edrdpc.com

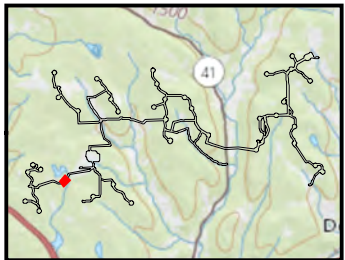
Bluestone Wind Project

Town of Windsor and Sanford, Broome County, New York

Appendix WW: Wetland Impact Drawing
Sheet 42 of 46



- Collection Line
- Wetland Continues
- Culvert
- Temporary Wetland Impact
- Temporary Limit of Disturbance
- PFO Delineated Wetland



Notes: 1. Basemap: NYSDOP "2014" orthoimagery map service. 2. This map was generated in ArcMap on September 14, 2018. 3. This is a color graphic. Reproduction in grayscale may misrepresent the data.



www.edrdpc.com

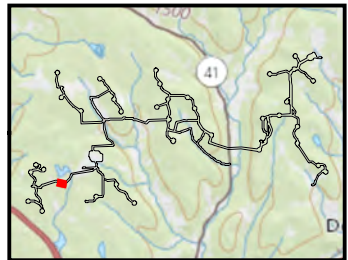
Bluestone Wind Project

Town of Windsor and Sanford, Broome County, New York

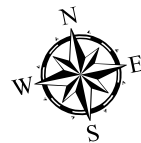
Appendix WW: Wetland Impact Drawing
Sheet 43 of 46



- Collection Line
- Wetland Continues
- Culvert
- Temporary Wetland Impact
- Temporary Limit of Disturbance
- PFO Delineated Wetland



Notes: 1. Basemap: NYSDOP "2014" orthoimagery map service. 2. This map was generated in ArcMap on September 14, 2018. 3. This is a color graphic. Reproduction in grayscale may misrepresent the data.



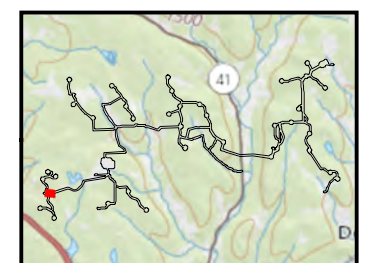
www.edrdpc.com

Bluestone Wind Project

Town of Windsor and
Sanford, Broome County,
New York

Appendix WW: Wetland
Impact Drawing
Sheet 44 of 46

- Access Road
- Collection Line
- Stream Continues
- Culvert
- Temporary Stream Impact
- Temporary Limit of Disturbance
- Permanent Limit of Disturbance
- Ephemeral Stream
- Intermittent Stream
- PFO Delineated Wetland
- PSS Delineated Wetland



Notes: 1. Basemap: NYSDOP "2014" orthoimagery map service. 2. This map was generated in ArcMap on September 14, 2018. 3. This is a color graphic. Reproduction in grayscale may misrepresent the data.



www.edrdpc.com



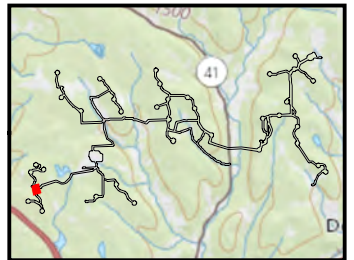
Bluestone Wind Project

Town of Windsor and Sanford, Broome County, New York

Appendix WW: Wetland Impact Drawing
Sheet 45 of 46



- Access Road
- Collection Line
- Wetland Continues
- Temporary Wetland Impact
- Permanent Wetland Impact
- Temporary Limit of Disturbance
- Permanent Limit of Disturbance
- Intermittent Stream
- PFO Delineated Wetland
- PSS Delineated Wetland



Notes: 1. Basemap: NYSDOP "2014" orthoimagery map service. 2. This map was generated in ArcMap on September 14, 2018. 3. This is a color graphic. Reproduction in grayscale may misrepresent the data.



www.edrdpc.com

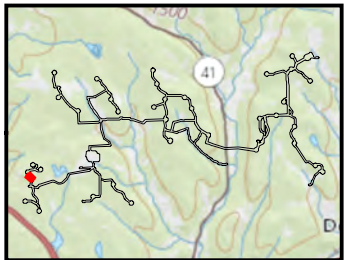
Bluestone Wind Project

Town of Windsor and Sanford, Broome County, New York

Appendix WW: Wetland Impact Drawing
Sheet 46 of 46



- Access Road
- Collection Line
- Stream Continues
- Culvert
- Temporary Stream Impact
- Permanent Stream Impact
- Temporary Limit of Disturbance
- Permanent Limit of Disturbance
- Intermittent Stream



Notes: 1. Basemap: NYSDOP "2014" orthoimagery map service. 2. This map was generated in ArcMap on September 14, 2018. 3. This is a color graphic. Reproduction in grayscale may misrepresent the data.



www.edrdpc.com