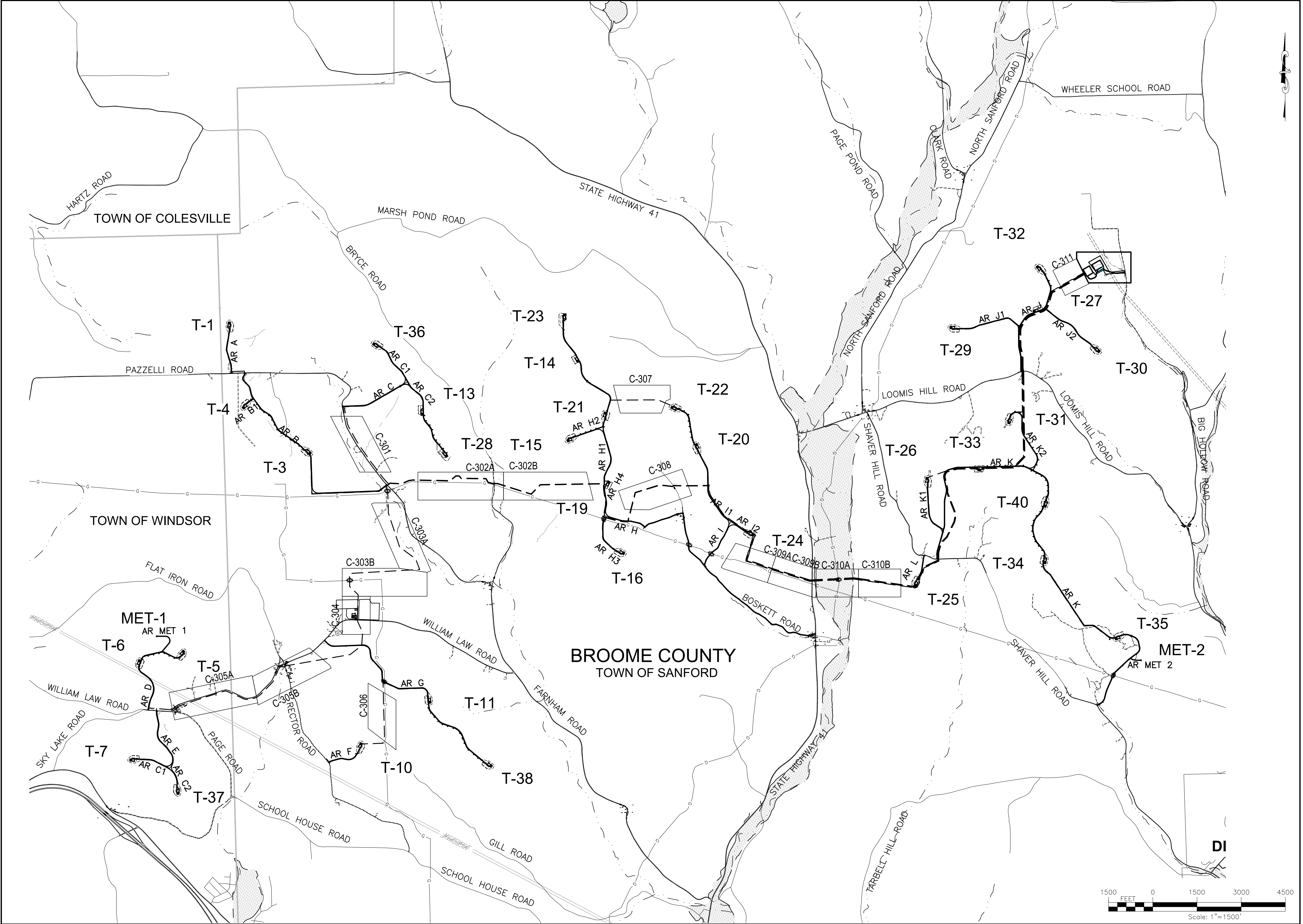


FILE NAME: H:\Projects\175022-00-Bluestone\_Wind\Eng\CAD\CUT\175022\_index\_plan.dwg  
DATE/TIME: 8/30/2018 2:27:19 AM  
USER: Doug Perrotto



PROJECT  
BLUESTONE WIND FARM  
TOWNS OF SANFORD AND WINDSOR  
BROOME COUNTY, NEW YORK  
NOT FOR CONSTRUCTION

DRAWING NO.  
**C-300**

SHEET 76 OF 90

TITLE OF DRAWING  
076 - COLLECTION LINE PLAN SHEET INDEX

PROJECT NO.  
175022

PROJECT MANAGER  
CS

DRAWN BY  
DP/JR

SCALE  
AS SHOWN

ISSUE DATE  
7/21/18

COPYRIGHT © 2018  
FISHER ASSOCIATES,  
P.E., L.S., L.A., D.P.C.

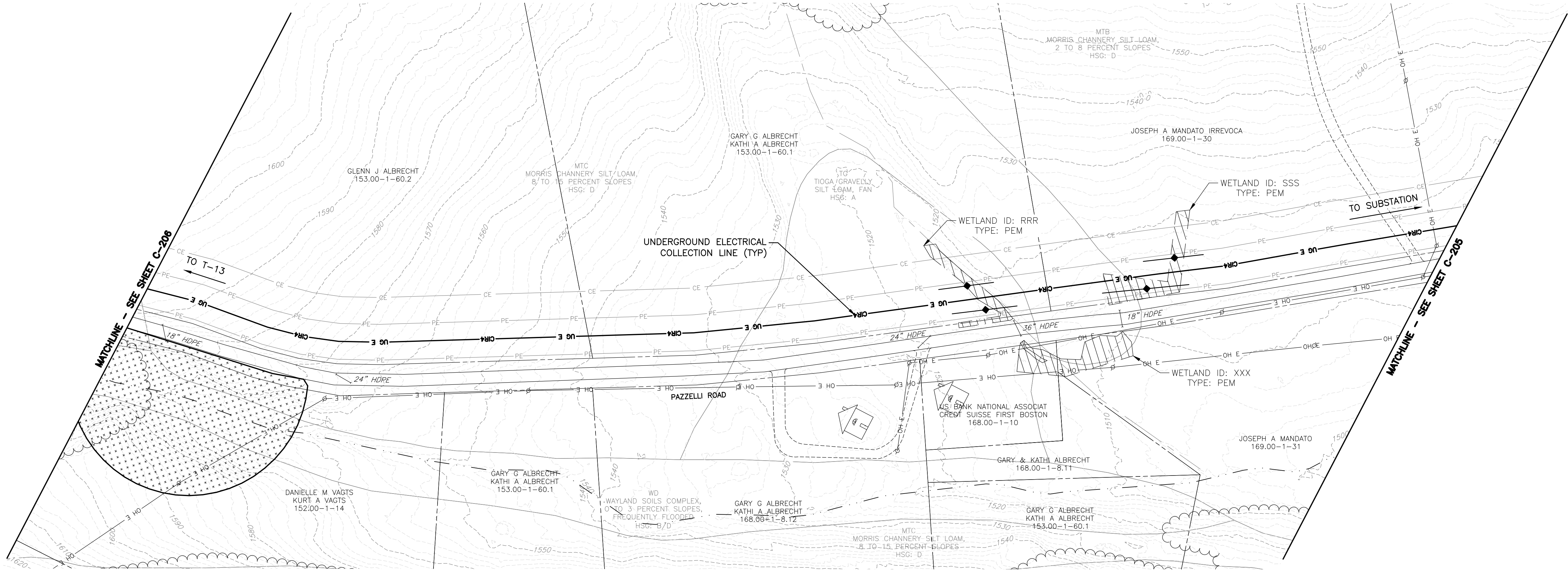
New York State Education Law, Section 1705(2), requires that the seal of the professional engineer or land surveyor be placed on all drawings prepared by or for any person, unless the seal is placed on the drawing by the professional engineer or land surveyor, to alter an item in any way.

If an item bearing the seal of a professional engineer or land surveyor is altered, the alteration shall be noted on the drawing by the professional engineer or land surveyor, and a specific description of the alteration.

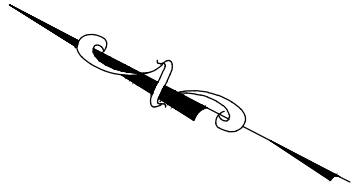
REV	DESCRIPTION	DATE	BY
7			
6			
5			
4			
3			
2			
1			




FILE NAME: H:\Projects\175022-00-Bluestone\_Wind\Eng\CAD\CUT\175022 C-301 - C-306.dwg  
DATE/TIME: 8/30/2018 2:28:19 AM  
USER: Doug Perrotto



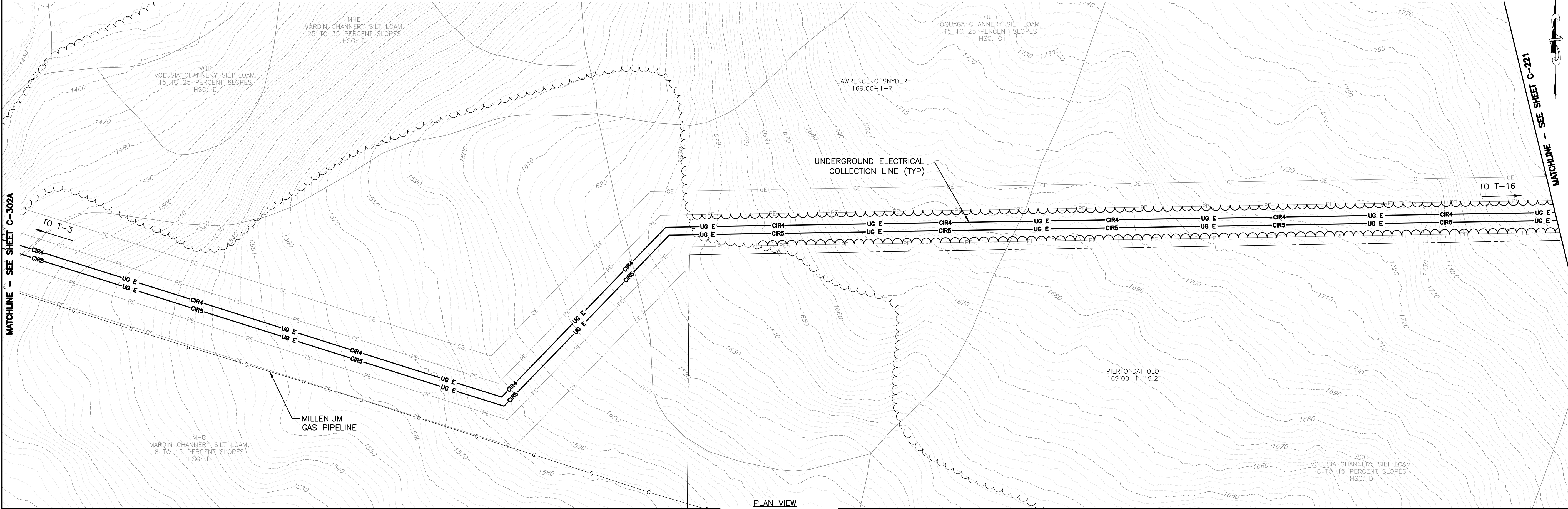
PLAN VIEW  
SCALE: 11X17 1"=200'  
22X34 1"=100'



DRAWING NO.		PROJECT BLUESTONE WIND FARM TOWNS OF SANFORD AND WINDSOR BROOME COUNTY, NEW YORK NOT FOR CONSTRUCTION		 FISHER ASSOCIATES WWW.FISHERASSOC.COM		TITLE OF DRAWING COLLECTION LINE PLAN		FA PROJECT NO. 175022		COPYRIGHT © 2018 FISHER ASSOCIATES P.E., L.S., L.A., D.P.C.		7			
								PROJECT MANAGER CS		New York State Education Law, Section 1705(2)(b) requires that this plan be for any person, unless the plan is signed by a professional engineer or land surveyor, to alter an item in any way. If an item bearing the seal of any professional engineer or land surveyor is altered, the alteration shall be noted by a line and the notation "Altered by" followed by the name of the professional engineer or land surveyor, and a specific description of the alteration.		6			
								DRAWN BY DP/JR				5			
								SCALE AS SHOWN				4			
								ISSUE DATE 7/21/18				3			
												2			
												1			
												REV		DATE BY	

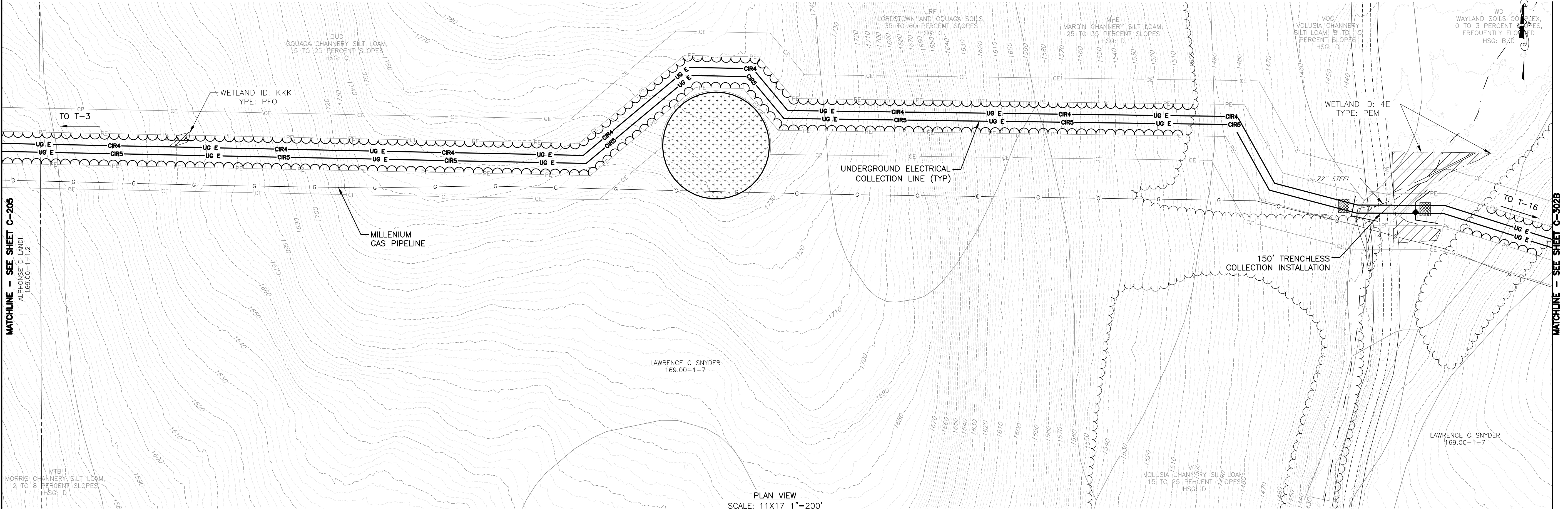


FILE NAME: H:\Projects\175022-00-Bluestone\_Wind\Eng\CAD\CUT\175022 C-301 - C-306.dwg  
DATE/TIME: 8/30/2018 11:44:12 AM  
USER: Doug Perrotto



PLAN VIEW  
SCALE: 11X17 1"=200'  
22X34 1"=100'

MATCHLINE - SEE SHEET C-205



PLAN VIEW  
SCALE: 11X17 1"=200'  
22X34 1"=100'

COPYRIGHT © 2018  
FISHER ASSOCIATES  
P.E., L.S., L.A., D.P.C.  
New York State Education Law, Section 1705(2) requires that all drawings be prepared by a registered professional engineer or land surveyor, to alter in any way, the original drawing or any portion thereof, without the written consent of the original author, and a specific description of the alteration.

FA PROJECT NO.  
175022  
PROJECT MANAGER  
CS  
DRAWN BY  
DP/JR  
SCALE  
AS SHOWN  
ISSUE DATE  
7/21/18



PROJECT  
BLUESTONE WIND FARM  
TOWNS OF SANFORD AND WINDSOR  
BROOME COUNTY, NEW YORK  
NOT FOR CONSTRUCTION

TITLE OF DRAWING  
COLLECTION LINE PLAN

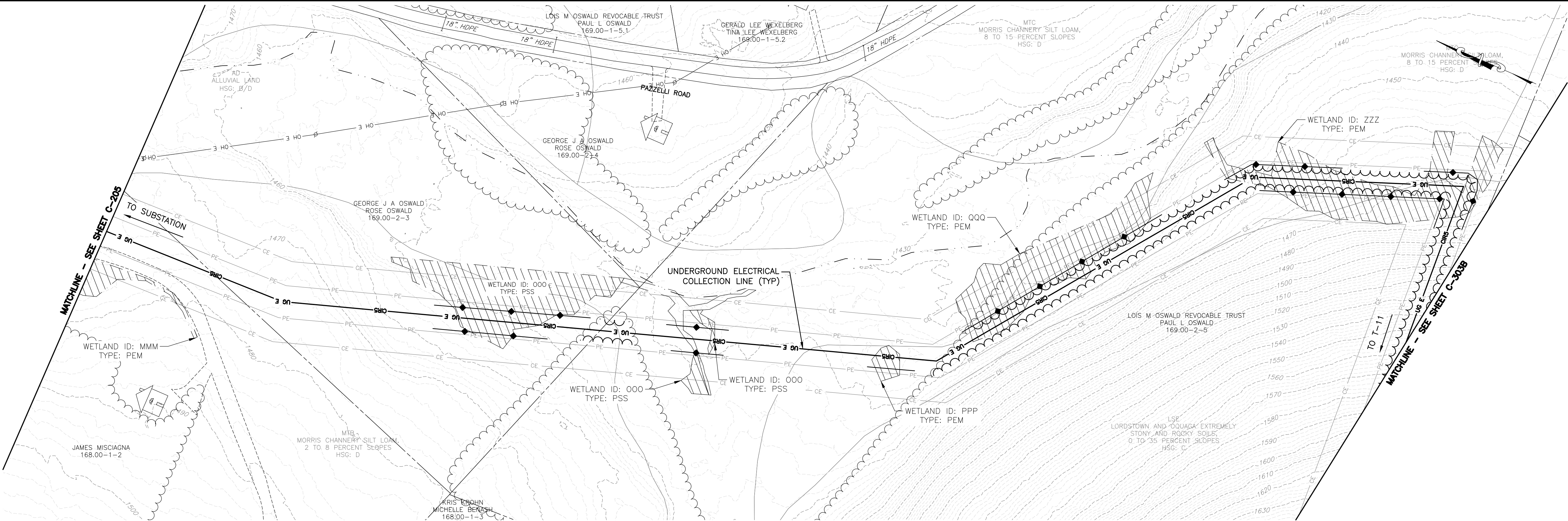
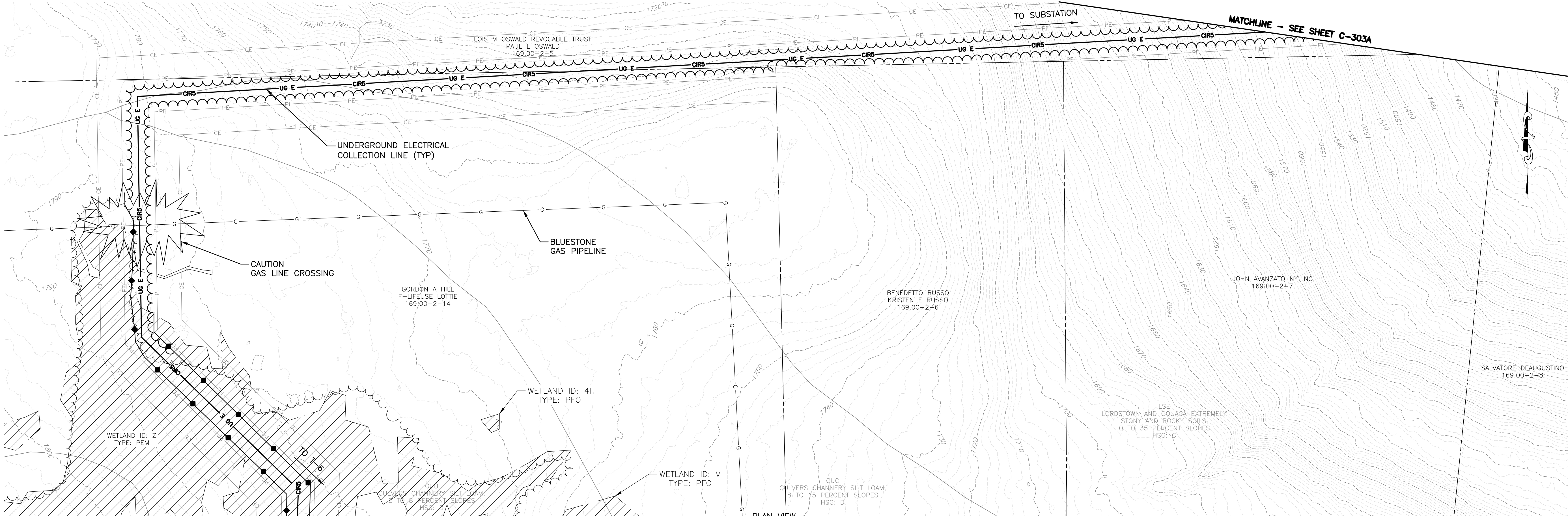
DRAWING NO.

C-302

REV	DESCRIPTION	DATE	BY
1			
2			
3			
4			
5			
6			
7			

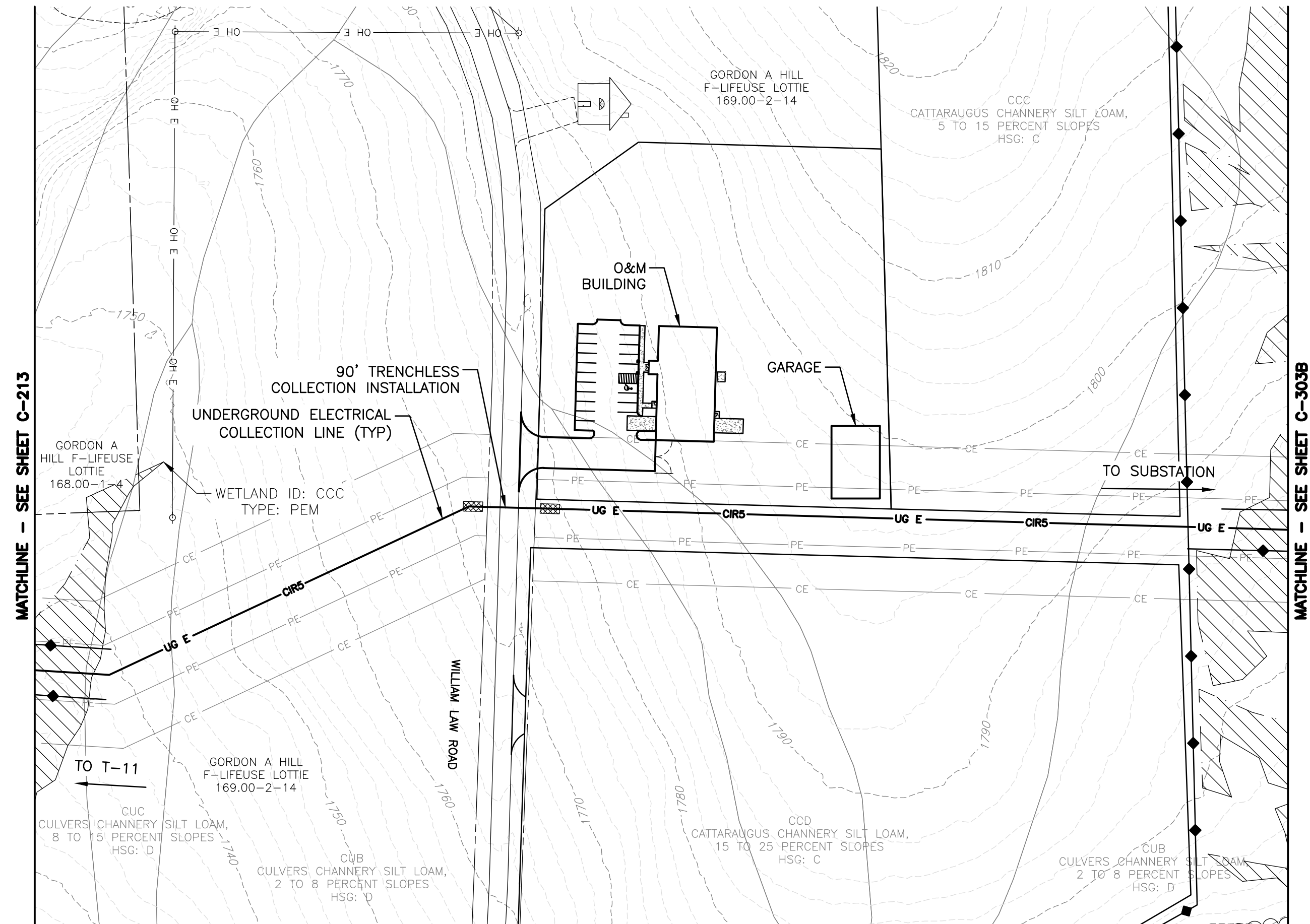


FILE NAME: H:\Projects\175022-00-Bluestone\_Wind\Eng\CAD\CUT\175022 C-301 - C-306.dwg  
DATE/TIME: 8/30/2018 2:30:09 AM  
USER: Doug Perrotto




PROJECT		TOWNS OF SANFORD AND WINDSOR BROOME COUNTY, NEW YORK NOT FOR CONSTRUCTION	
DRAWING NO.		C-303	
DRAWING NO.		SHEET 79 OF 90	
TITLE OF DRAWING		COLLECTION LINE PLAN	
FISHER ASSOCIATES WWW.FISHERASSOC.COM		FISHER ASSOCIATES WWW.FISHERASSOC.COM	
FA PROJECT NO. 175022 PROJECT MANAGER CS		DRAWN BY DP/JR SCALE AS SHOWN	
ISSUE DATE 7/21/18		DESCRIPTION	
DATE		BY	
REV		1	
2		3	
4		5	
6		7	
FISHER ASSOCIATES P.E., L.S., D.P.C. New York State Education Law, Section 1601(2)(b) requires that the seal of any professional engineer or land surveyor, to alter on item in any way, if an item bearing the seal of said professional engineer or land surveyor is altered, the seal of said professional engineer or land surveyor, and a specific description of the alteration.		COPYRIGHT © 2018 FISHER ASSOCIATES P.E., L.S., D.P.C.	





PLAN VIEW  
SCALE: 11X17 1"=200'  
22X34 1"=100'

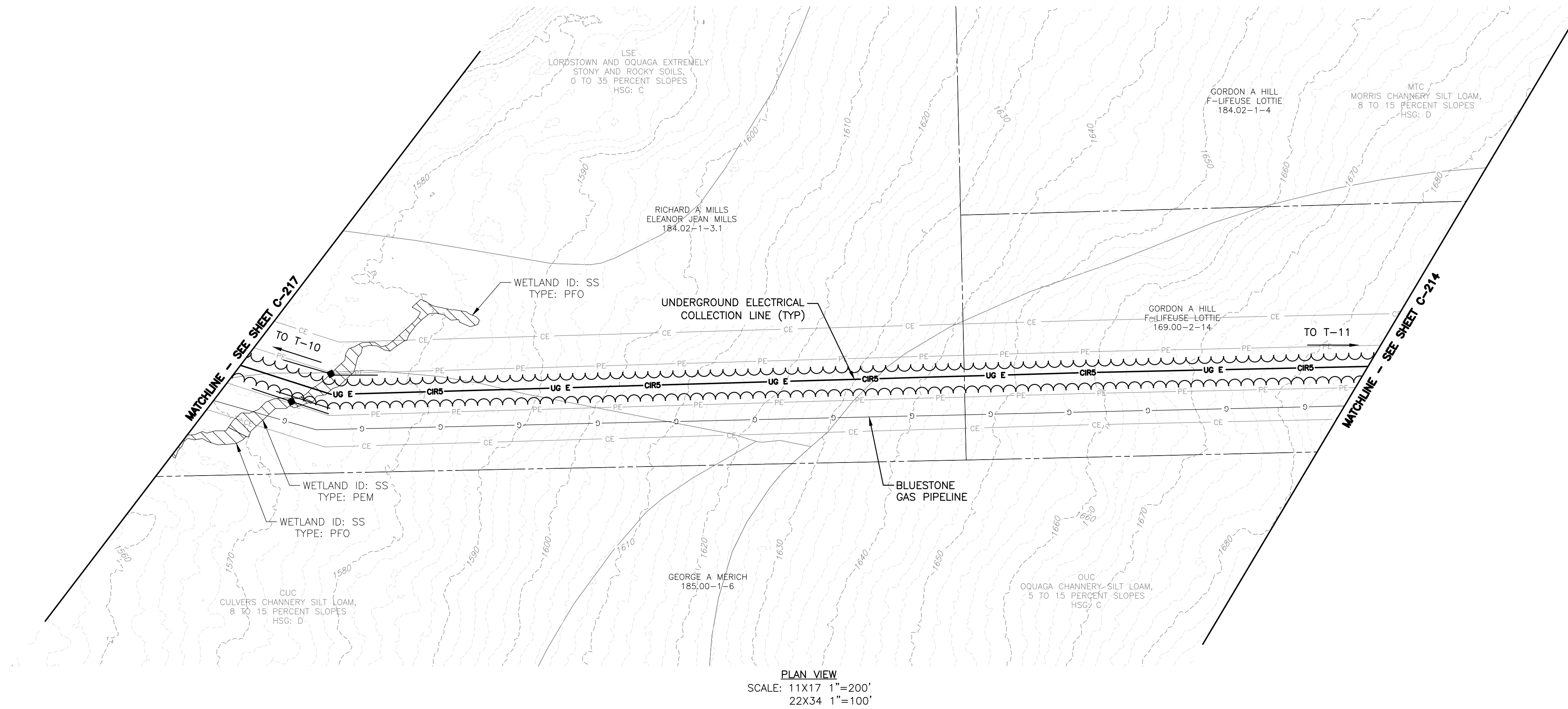
DRAWING NO.	PROJECT BLUESTONE WIND FARM TOWNS OF SANFORD AND WINDSOR BROOME COUNTY, NEW YORK NOT FOR CONSTRUCTION	 <b>FISHER</b> ASSOCIATES WWW.FISHERASSOC.COM	PROJECT 175022 PROJECT MANAGER CS  DRAWN BY DP/JR SCALE AS SHOWN	ISSUE DATE 7/21018	FA PROJECT NO.	COPYRIGHT © 2018 FISHER ASSOCIATES P.E. L.S. L.A. D.P.C.				
						7				
C-304	SHEET 80 OF 90					New York State Excavation Law Section 1720a states that it is a violation of the law to excavate any property while it is active under the direction of a licensed professional engineer or architect, to alter an item in any way, if an item bearing the seal of an engineer or architect is altered, the alteration is surveyed and entered on the record of the survey, and the alteration is shown on the plan and is signed by the engineer or architect and his/her signature and the date of such alteration are shown on the plan, specific description				
						6				
						5				
						4				
						3				
						2				
						1				
						REV	DESCRIPTION	DATE	BY	



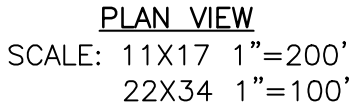




FILE NAME: H:\Projects\175022-00-Bluestone\_Wind\Eng\CAD\CUT\175022 C-301 - C-306.dwg  
DATE/TIME: 8/30/2018 2:31:49 AM  
USER: Doug Perrotto

[illegible]





TITLE OF DRAWING  
COLLECTION LINE PLANS

C-307

SHEET 83 OF 90

Copyright © 2018  
FISHER ASSOCIATES,  
P.E.'S, L.A., D.P.C.

DRAWN BY DP/JR  
SCALE AS SHOWN  
ISSUE DATE 7/21018

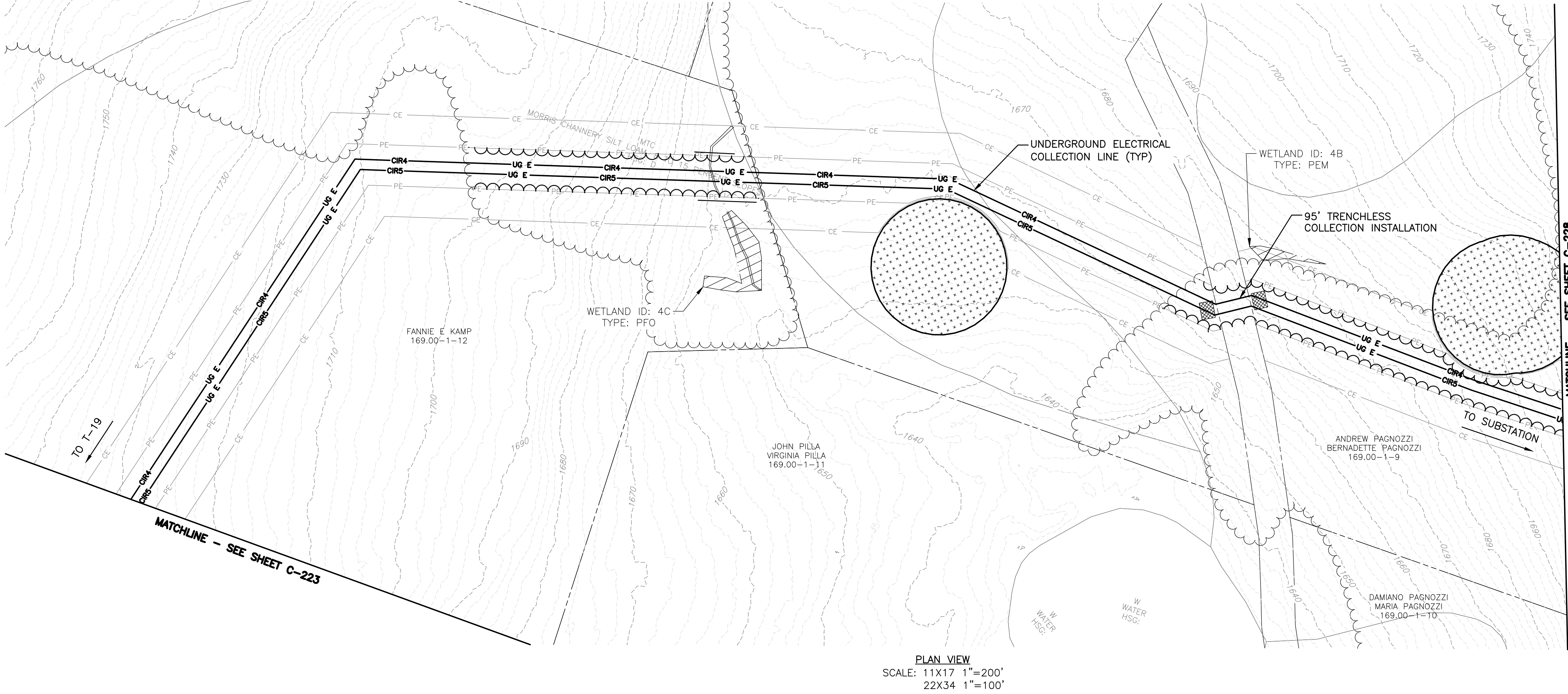
PROJECT	BLUESTONE WIND FARM TOWNS OF SANFORD AND WINDSOR BROOME COUNTY, NEW YORK NOT FOR CONSTRUCTION
TITLE OF DRAWING	COLLECTION LINE PLANS

DRAWING NO.

**C-307**

SHEET 83 OF 90

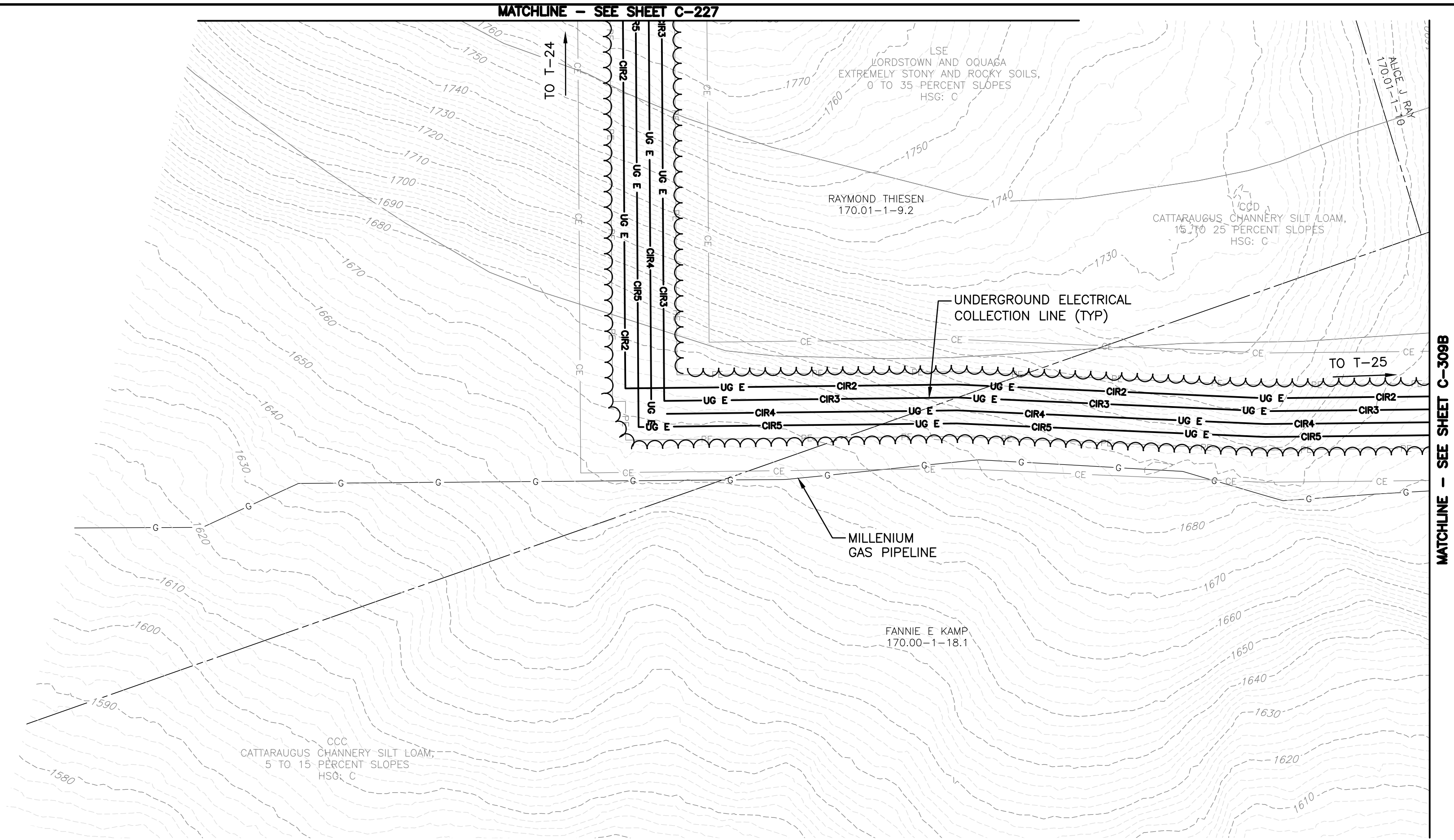




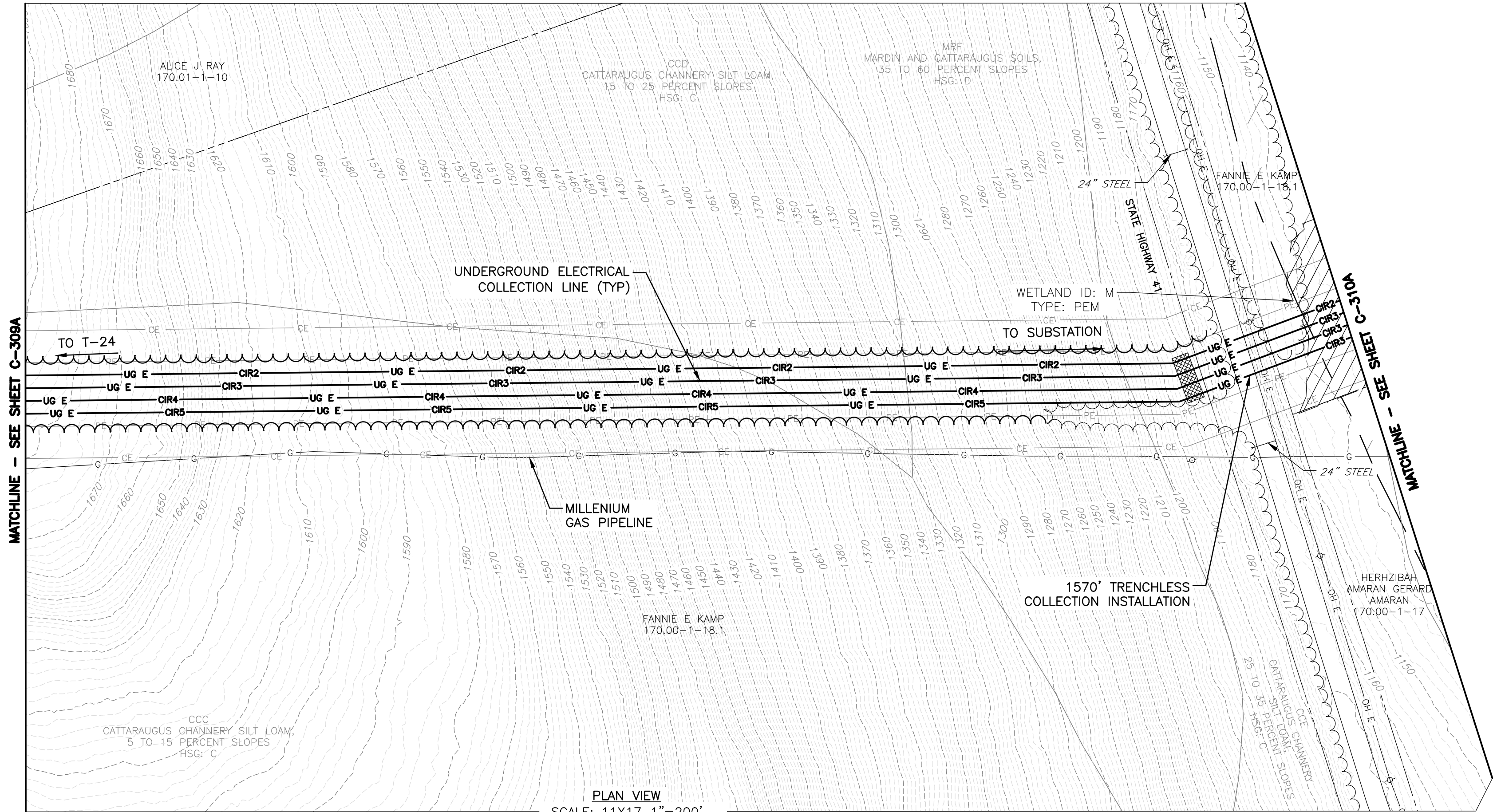
PROJECT BLUESTONE WIND FARM TOWNS OF SANFORD AND WINDSOR BROOME COUNTY, NEW YORK NOT FOR CONSTRUCTION		DRAWING NO. <b>C-308</b>		TITLE OF DRAWING COLLECTION LINE PLANS		FISHER ASSOCIATES WWW.FISHERASSOC.COM		FA PROJECT NO. 175022 PROJECT MANAGER CS DRAWN BY DP/JR SCALE AS SHOWN ISSUE DATE 7/21/18		COPYRIGHT © 2018 FISHER ASSOCIATES P.E., L.S., L.A., D.P.C. New York State Education Law, Section 1705(2), requires that all drawings created after March 12, 2018, be signed by a licensed professional engineer or land surveyor, to alter an item in any way. If an item bearing the seal of a professional engineer or land surveyor is altered, the alteration must be noted on the drawing by a line indicating the alteration, and a specific description of the alteration.		7	6	5	4	3	2	1	REV	DESCRIPTION	DATE	BY
---	--	-----------------------------	--	---	--	--	--	--	--	--	--	---	---	---	---	---	---	---	-----	-------------	------	----



FILE NAME: H:\Projects\175022-00-Bluestone\_Wind\Eng\CAD\CUT\175022 C-307 - C-311.dwg  
DATE/TIME: 8/30/2018 2:34:10 AM  
USER: Doug Perrotto



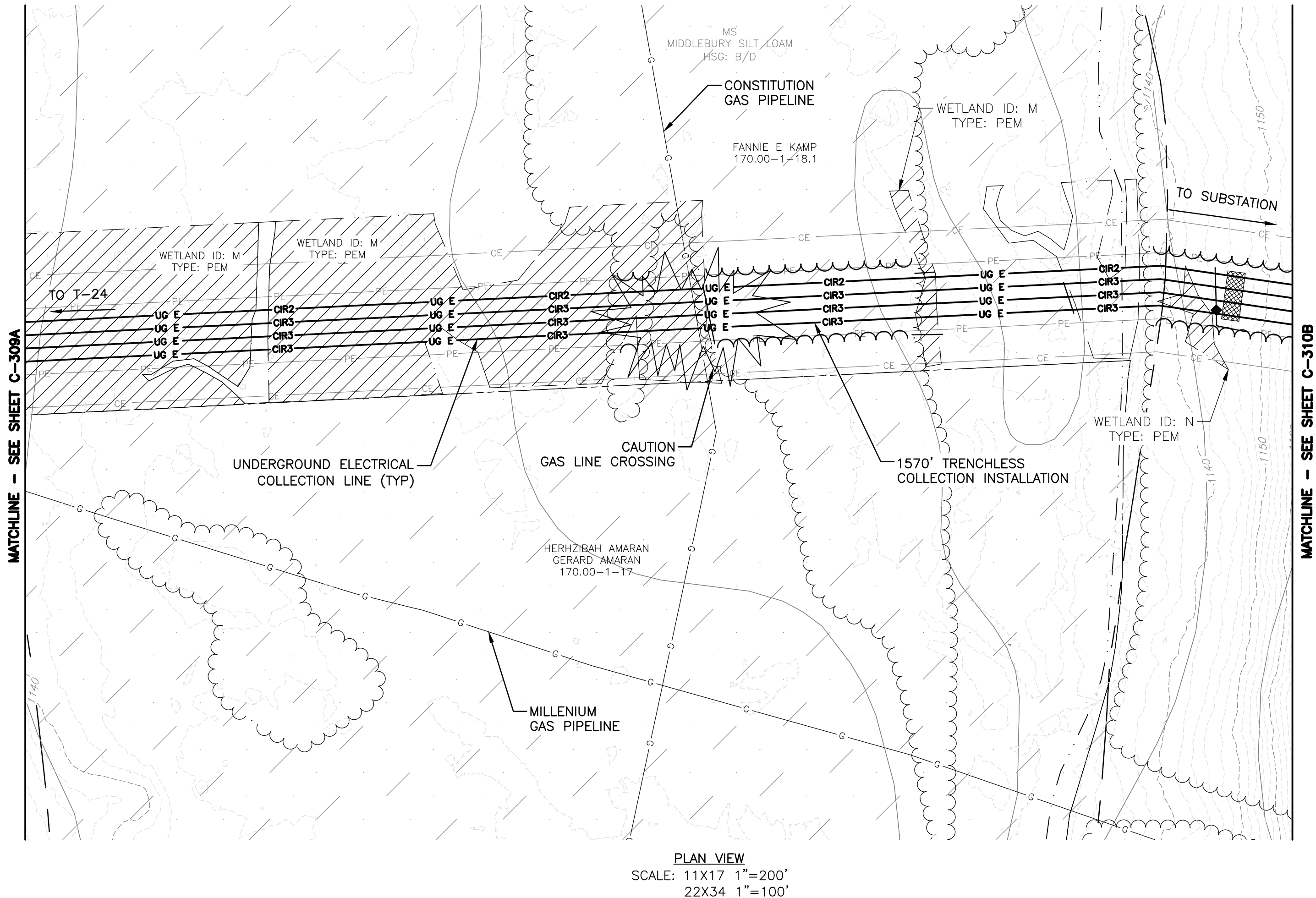
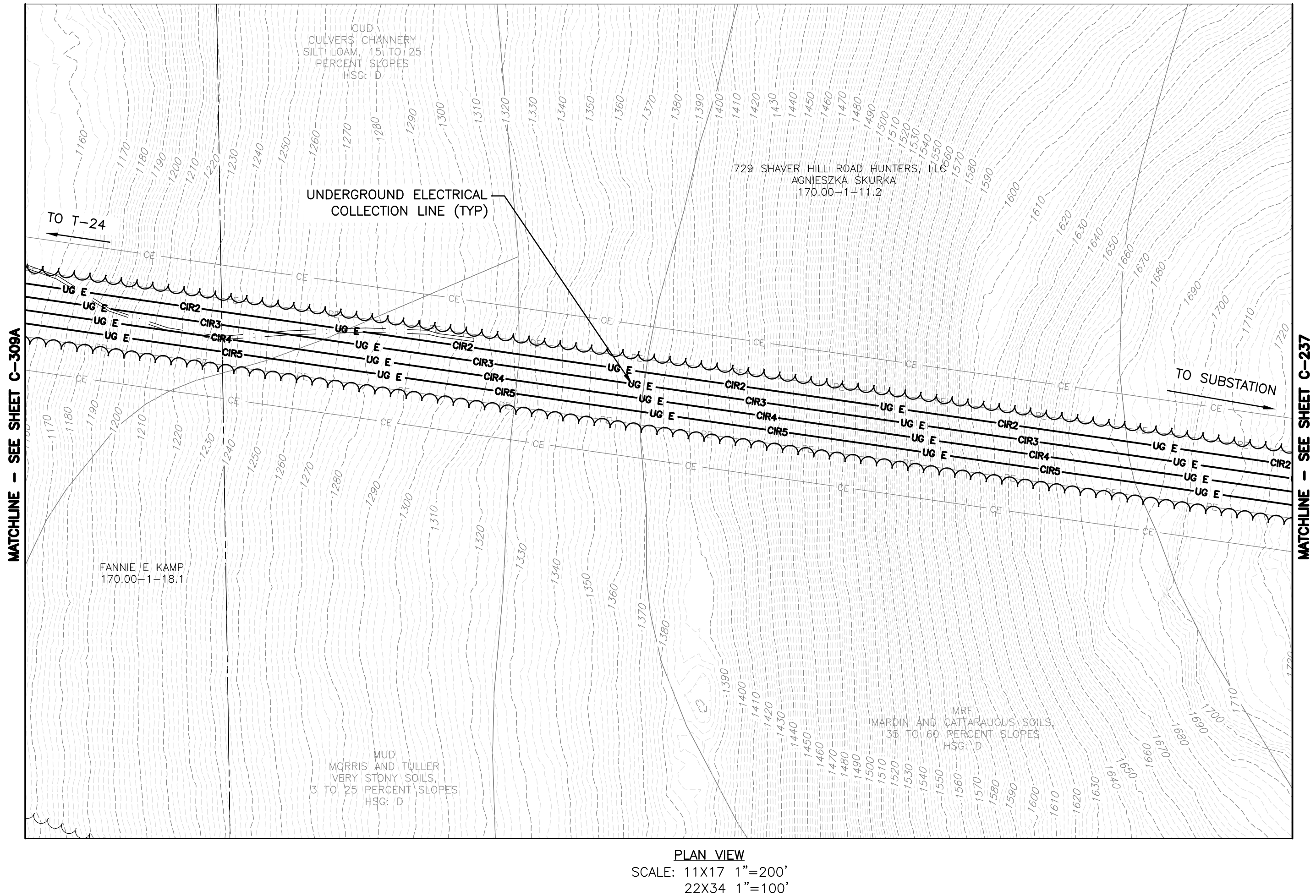
PLAN VIEW  
SCALE: 11X17 1"=200'  
22X34 1"=100'



PLAN VIEW  
SCALE: 11X17 1"=200'  
22X34 1"=100'

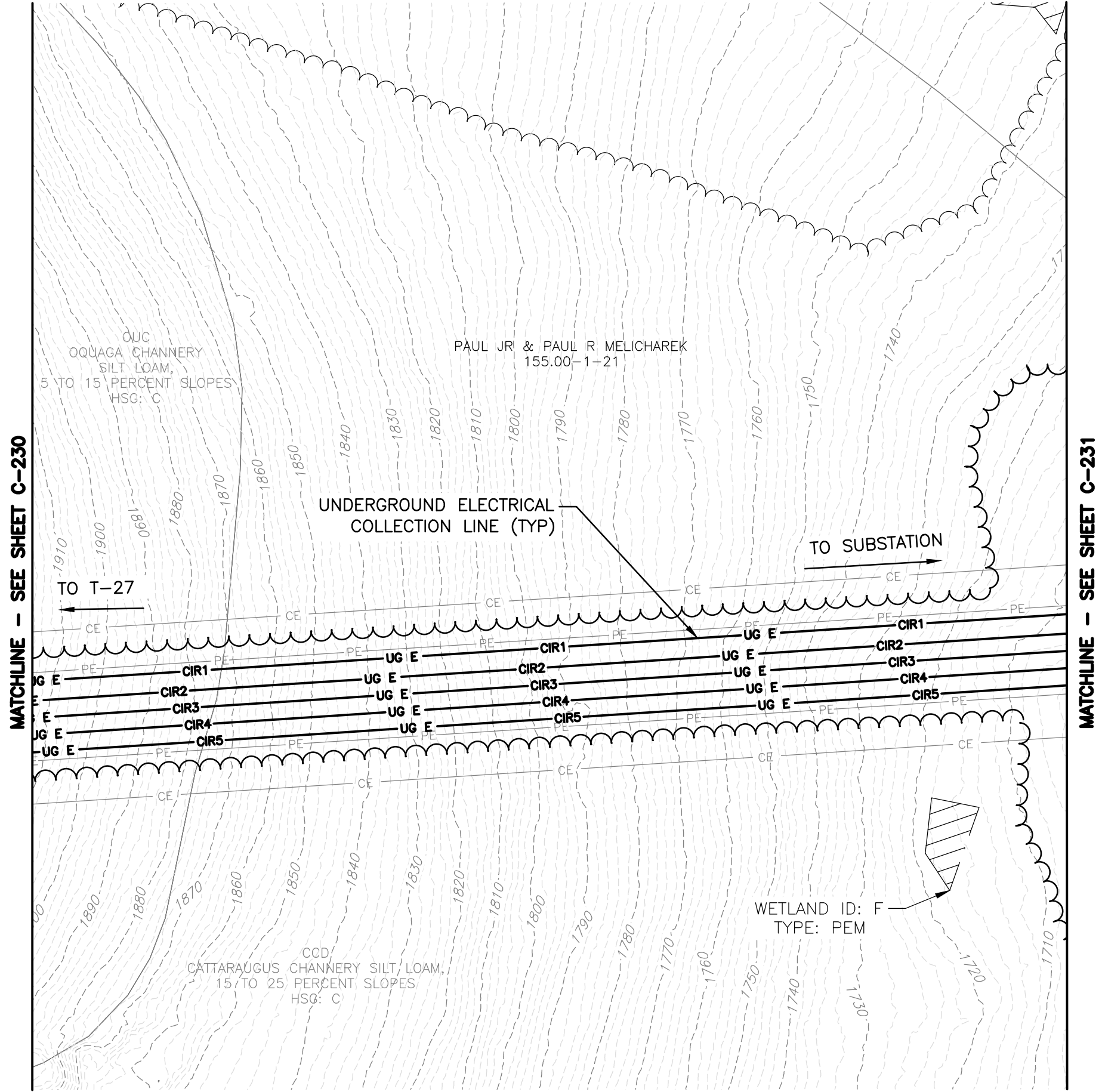
PROJECT		DRAWING NO.		DATE	
BLUESTONE WIND FARM		C-309			
TOWNS OF SANFORD AND WINDSOR					
BROOME COUNTY, NEW YORK					
NOT FOR CONSTRUCTION					
TITLE OF DRAWING		DESCRIPTION		BY	
COLLECTION LINE PLANS					
FISHER ASSOCIATES		FISHER ASSOCIATES			
WWW.FISHERASSOC.COM					
FA PROJECT NO.		7			
175022		6			
PROJECT MANAGER		5			
CS		4			
DRAWN BY		3			
DP/JR		2			
SCALE		1			
AS SHOWN		REV			
ISSUE DATE					
7/21/18					



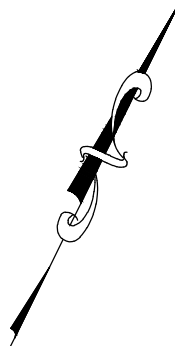



PROJECT		DRAWING NO.		TITLE OF DRAWING		COLLECTION LINE PLANS		NOT FOR CONSTRUCTION		TOWNS OF SANFORD AND WINDSOR BROOME COUNTY, NEW YORK		FISHER ASSOCIATES		WWW.FISHERASSOC.COM		PROJECT NO. 175022		PROJECT MANAGER CS		DRAWN BY DP/JR		SCALE AS SHOWN		ISSUE DATE 7/21/18		COPYRIGHT © 2018 FISHER ASSOCIATES P.E., L.S., L.A., D.P.C.		New York State Education Law Section 1705(2)(b) requires that this plan be for any person, unless the plan is prepared by a duly licensed professional engineer or land surveyor, to alter on item in any way. If an item bearing the seal of an engineer or land surveyor is altered, the alteration shall be noted by the alteration, and a specific description of the alteration.		7		6		5		4		3		2		1		REV		DESCRIPTION		DATE		BY	
		C-310										FISHER ASSOCIATES		WWW.FISHERASSOC.COM		PROJECT NO. 175022		PROJECT MANAGER CS		DRAWN BY DP/JR		SCALE AS SHOWN		ISSUE DATE 7/21/18		COPYRIGHT © 2018 FISHER ASSOCIATES P.E., L.S., L.A., D.P.C.		New York State Education Law Section 1705(2)(b) requires that this plan be for any person, unless the plan is prepared by a duly licensed professional engineer or land surveyor, to alter on item in any way. If an item bearing the seal of an engineer or land surveyor is altered, the alteration shall be noted by the alteration, and a specific description of the alteration.		7		6		5		4		3		2		1		REV		DESCRIPTION		DATE		BY	






PLAN VIEW  
SCALE: 11X17 1"=200'  
22X34 1"=100'



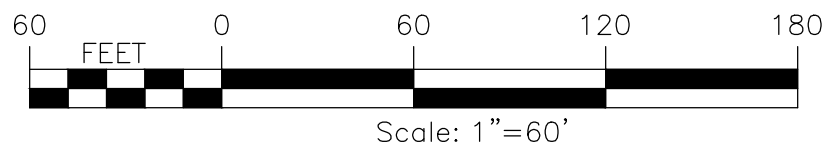
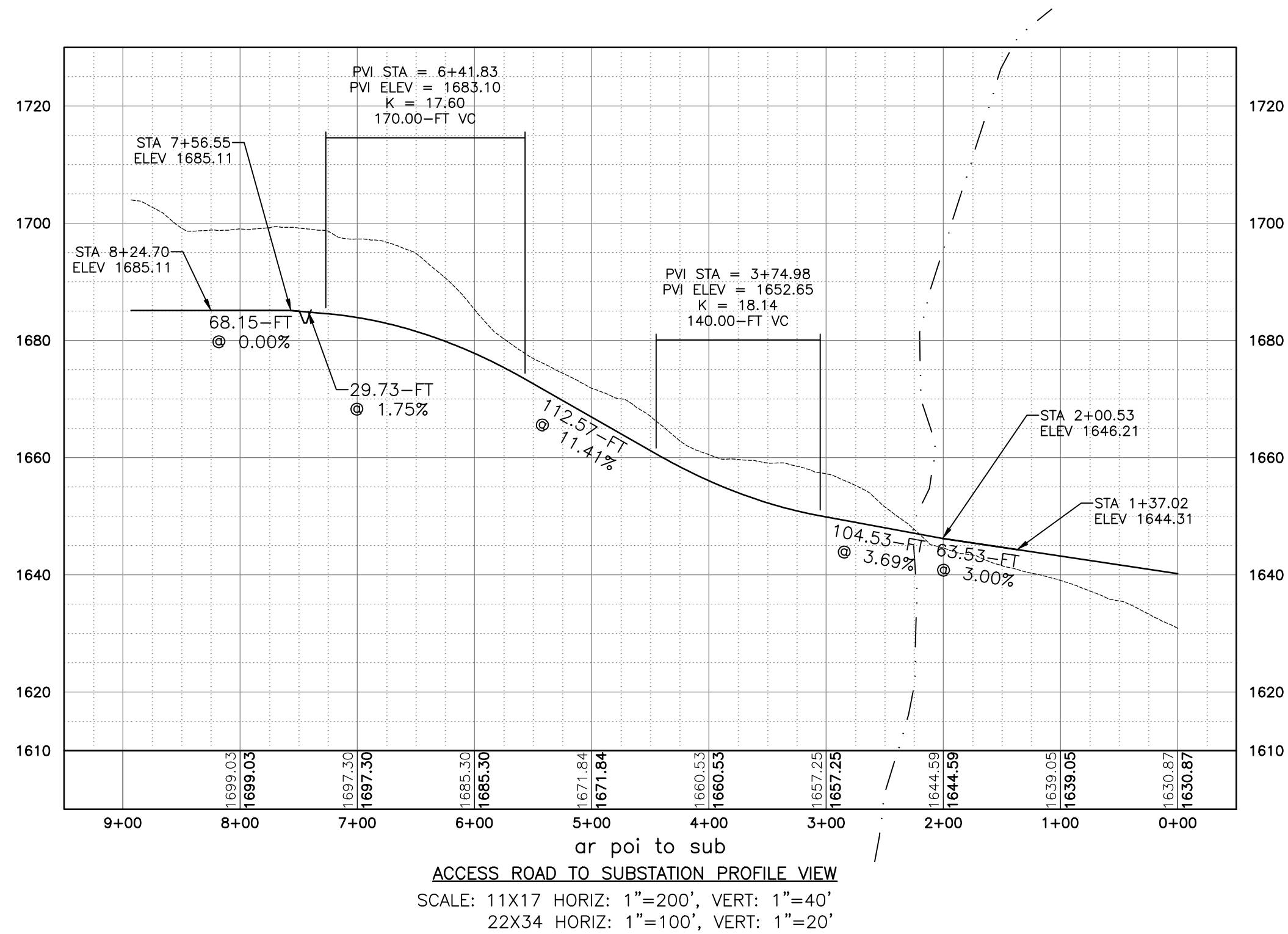
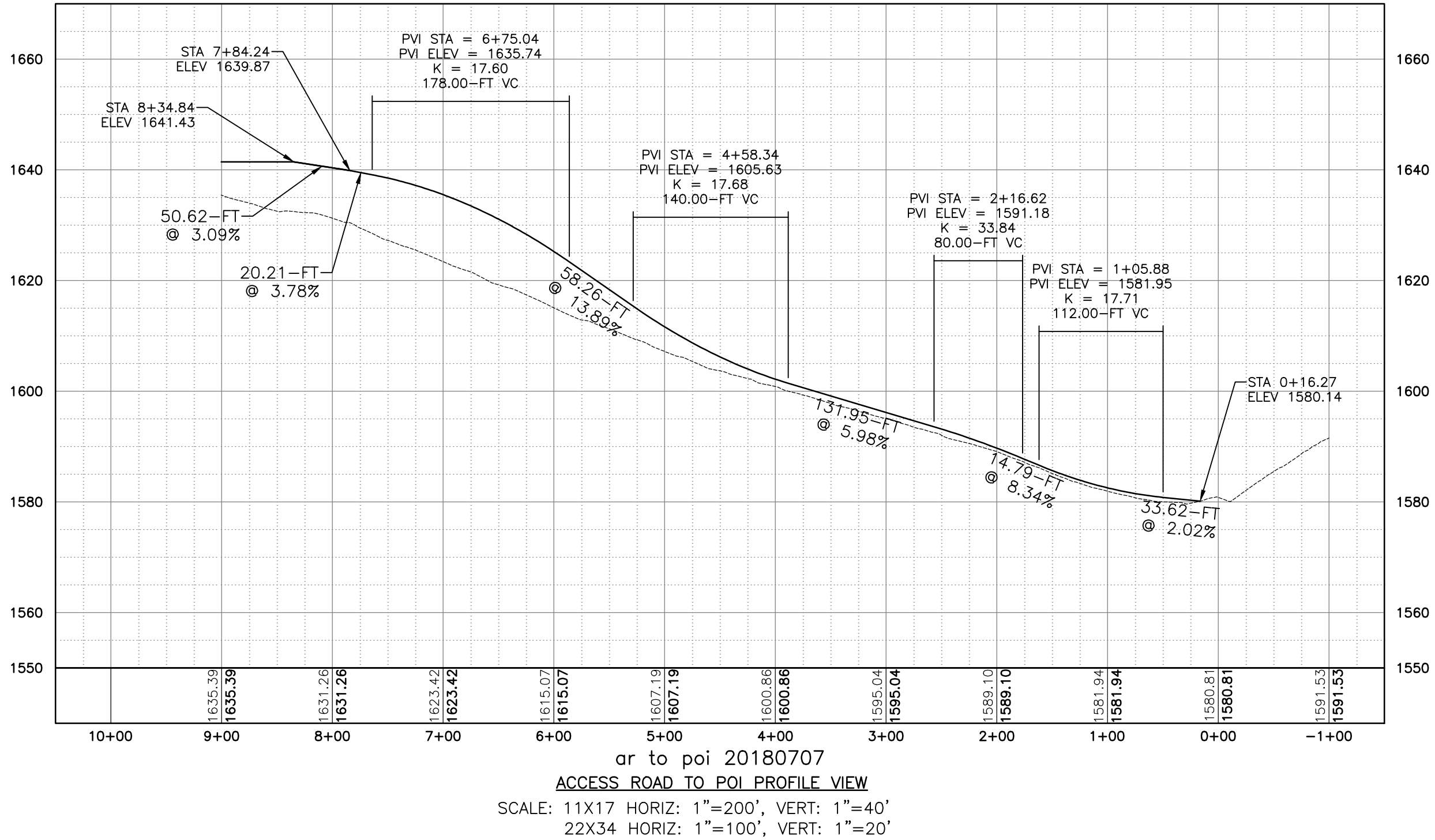
<div><div>PROJECT</div><div>BLUESTONE WIND FARM TOWNS OF SANFORD AND WINDSOR BROOME COUNTY, NEW YORK NOT FOR CONSTRUCTION</div></div> <div><div>TITLE OF DRAWING</div><div>COLLECTION LINE PLANS</div></div>	<div><div><div>FISHER</div><div>ASSOCIATES</div></div><div><a href="http://WWW.FISHERASSOC.COM">WWW.FISHERASSOC.COM</a></div></div>	<div><div>FA PROJECT NO.</div><div>175022</div></div> <div><div>PROJECT MANAGER</div><div>CS</div></div> <div><div>DRAWN BY</div><div>DP/JR</div></div> <div><div>SCALE</div><div>AS SHOWN</div></div> <div><div>ISSUE DATE</div><div>7/21/18</div></div>	<div><div>COPYRIGHT © 2018</div><div>FISHER ASSOCIATES,</div><div>P.E., L.S., L.A., D.P.C.</div></div>	7		
			<div><div>New York State Education Law, Section 1705(3), requires that all drawings be prepared by a professional engineer or land surveyor, to alter an item in any way.</div></div>	6		
			<div><div>If an item bearing the seal of an engineer or land surveyor is altered, the alteration shall be noted by the engineer or land surveyor, and a specific description of the alteration.</div></div>	5		
				4		
				3		
				2		
				1		
	REV	DESCRIPTION	DATE	BY		



PROJECT BLUESTONE WIND FARM TOWNS OF SANFORD AND WINDSOR BROOME COUNTY, NEW YORK NOT FOR CONSTRUCTION	 FISHER ASSOCIATES WWW.FISHERASSOC.COM	PROJECT NO. 175022 PROJECT MANAGER CS DRAWN BY DJ/JR SCALE AS SHOWN	ISSUE DATE 7/21/018	COPYRIGHT © 2018 FISHER ASSOCIATES P.E. I.S., L.A., D.P.C.	7		
				New York State Education Law, Section 7209 states that it is a violation of the law for any person to prepare or cause to be prepared any drawing or plan to be used under the direction of a licensed professional engineer or professional surveyor, to offer on item in any way. If an item bearing the seal of an engineer or professional surveyor is used without the authorizing engineer or land surveyor, the user of the drawing or plan is guilty of the violation stated by, followed by, the applicable provisions of the laws of such jurisdiction, and a specific description of the violation.	6		
					5		
					4		
					3		
					2		
					1		
TITLE OF DRAWING SUBSTATION & POINT OF INTERCONNECT SITE PLAN				REV		DATE	BY
DRAWING NO. <b>C-400</b>							
SHEET 88 OF 90							



FILE NAME: H:\Projects\175022-00-Bluestone\_Wind\Eng\CAD\CUT\175022 site plans.dwg  
DATE/TIME: 8/30/2018 2:37:35 AM  
USER: Doug Perrotto



PROJECT BLUESTONE WIND FARM TOWNS OF SANFORD AND WINDSOR BROOME COUNTY, NEW YORK NOT FOR CONSTRUCTION		DRAWING NO. <b>C-401</b>		TITLE OF DRAWING SUBSTATION & POINT OF INTERCONNECT ACCESS ROAD PROFILES	
FA PROJECT NO. <b>175022</b> PROJECT MANAGER <b>CS</b>		DRAWN BY <b>DP/JR</b> SCALE <b>AS SHOWN</b>		ISSUE DATE <b>7/21/18</b>	
COPYRIGHT © 2018 FISHER ASSOCIATES P.E., L.S., L.A., D.P.C. New York State Education Law, Section 1705(2) requires that all drawings created by a professional engineer or land surveyor, to alter in any way, the drawing engineer or land surveyor's name, title, or seal, or the date of the drawing, be altered by the drawing engineer or land surveyor, and a specific description of the alteration.		REV		DESCRIPTION	DATE BY
		7			
		6			
		5			
		4			
		3			
		2			
		1			





